



QuietRock® 530

HIGHER PERFORMANCE, HIGHER RELIABILITY, LOWER COST SOUNDPROOFING SOLUTIONS.

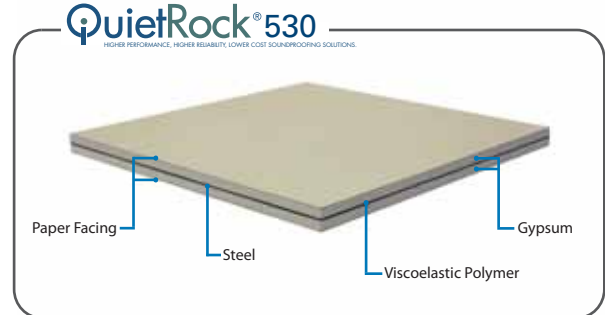


Superb sound performance plus shear resistance

QuietRock 530 is a versatile, high performance drywall panel that delivers superb noise reduction. This 'superpanel' is UL fire-rated, STC-rated, shear-rated, impact-resistant, and optionally mold-resistant.

QuietRock 530 Benefits

- Delivers STC ratings of 52-74
- Fire rating equivalent to Type X drywall: UL fire-rated
- Shear-rated (average 487 lbs/ft)
- Mold resistant face and back available as an option
- Hangs and finishes like standard drywall
- QuietRock 530RF available for RF and noise shielding and tested in accordance with IEEE 2999-1097; Radio Frequency shield testing (standard 530 does not provide RF shielding)
- Continues to reduce noise even when fixtures are installed, such as shelves or lamps
- Only 5/8" thick
- Outperforms other sound damping methods, including soundboard and resilient channel
- Environmentally friendly, lab tested
- Worldwide patents pending
- Can be used in load bearing and non-load bearing assemblies
- Tested in accordance with ASTM E695-03; impact load testing
- Tested in accordance with article 4, section 27-335.1(2) and article 5, section 27-348E of the building code of the city of New York



STC Comparison*

5/8" gypsum	39
6" CMU	45
Soundboard	46
Mass loaded vinyl	45

QuietRock 530 52-53

*in single wood stud construction, 24" OC

Product Ordering Codes

4' x 8' panel:	QR530STD4X8
4' x 9' panel:	QR530STD4X9
4' x 10' panel:	QR530STD4X10
4' x 12' panel:	QR530STD4X12

QuietRock 530 is available with an optional mold resistant coating. If desired, please specify this option when ordering.

Product Specifications

Model:	QuietRock 530
Thickness:	5/8", tapered edges
Weight:	3.3 lbs/sqft
STC-rated:	52-74 (ASTM E90)
Fire-rated:	1 hour, Type X equivalent (ASTM E119)
UL-rated assemblies:	U305, U309, U340, U341, U376, U386, W313, W317
Shear value:	487 lb/ft (ASTM E2126)
Surface flame:	Class A (ASTM E84)
Permeability:	0
R value:	0.38

Applications

- Multi-family
- Commercial
- Hospitals
- Hotels
- Schools
- Home theaters
- Media rooms
- Recording studios
- Party walls

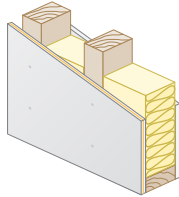


QuietRock[®] 530

HIGHER PERFORMANCE, HIGHER RELIABILITY, LOWER COST SOUNDPROOFING SOLUTIONS.

Lowest-Cost Solutions in the Market

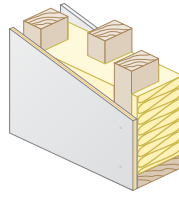
Lowest Cost Wall
QuietRock on one side



*UL/ULC Design #:
U309, U376
U386, W313,
W317

STC: 52 - Fire: 1 Hour

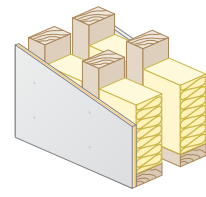
Staggered Stud Wall
QuietRock on one side



*UL/ULC Design #:
U340, U376,
U386, W313,
W317

STC: 58* - Fire: 1 Hour

Double Stud Wall
QuietRock on one side

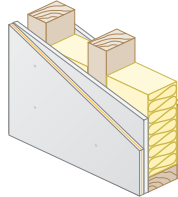


*UL/ULC Design #:
U341, U376,
U386, W313,
W317

STC: 64* - Fire: 1 Hour

Retrofit and Remodeling

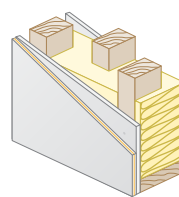
Single Stud Wall
QuietRock on one side of
existing drywall



*UL/ULC Design #:
U309, U376,
U386, W313,
W317

STC: 53 - Fire: 1 Hour

Staggered Stud Wall
QuietRock on one side of
existing drywall

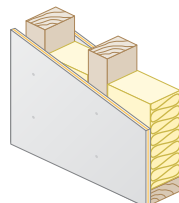


*UL/ULC Design #:
U340, U376,
U386, W313,
W317

STC: 59* - Fire: 1 Hour

High Performance

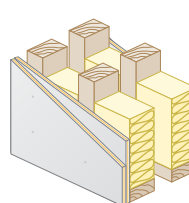
Single Stud Wall
QuietRock on both sides



*UL/ULC Design #:
U376, W313

STC: 54 - Fire: 1 Hour

Double Stud Wall
Double layer of QuietRock
on both sides



*UL/ULC Design #:
U341, U376,
W313

STC: 74 - Fire: 1 Hour

*Estimated

See Acoustic and Fire Assemblies document for more information.

The information contained in this document is for general information purposes only. Features and specifications are subject to change. The diagrams and stated STC ratings listed are intended to serve as a guide. Construction practices have an influence on final STC ratings. Serious Energy cannot guarantee actual STC ratings. Flanking sound patterns, the integrity of the wall, and floor and ceiling construction are important factors in effective sound control.

STCs shown are on 24" wood studs.