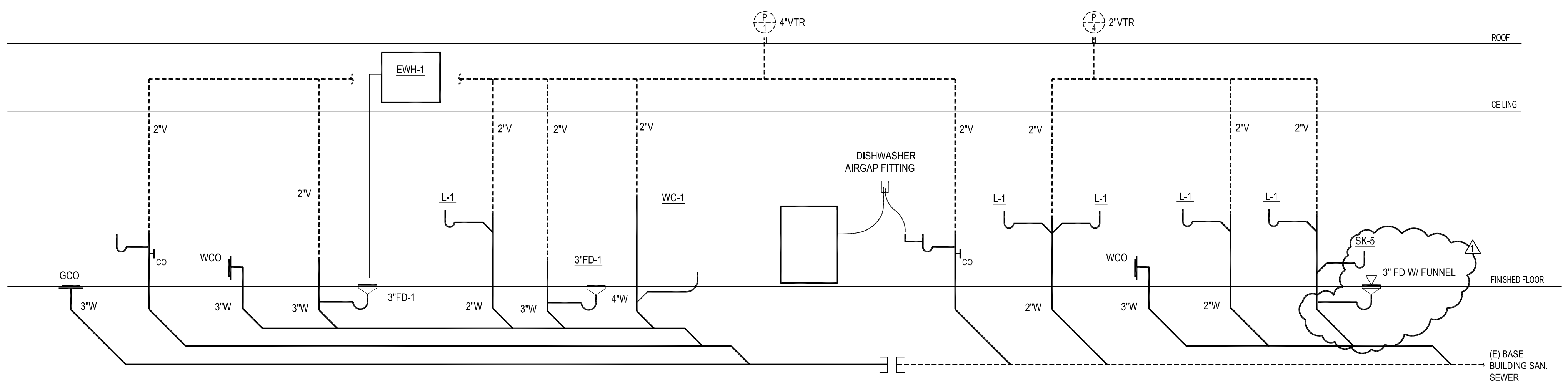
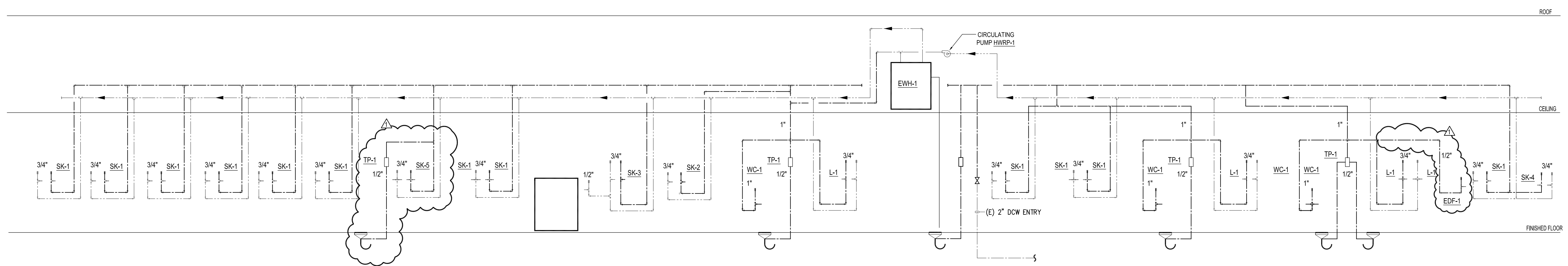


1 RISER - SEWER/VENT (P2, P3, & P5)  
Scale: NONE



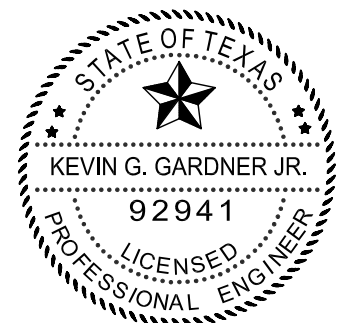
2 RISER - SEWER/VENT (P1 & P4)  
Scale: NONE



3 RISER - DOMESTIC WATER  
Scale: NONE

THIS DOCUMENT HAS BEEN REPRODUCED ELECTRONICALLY AT THE REQUEST OF EL CENTRO DE CORAZÓN CANAL ST. FOR REFERENCE USE ONLY. THE SEAL APPEARING ON THIS DOCUMENT WAS AUTHORIZED BY KEVIN G. GARDNER JR. P.E. 92941 ON 19 NOV. 2009. TO RECEIVE REPRODUCTIONS OF THE ORIGINAL SIGNED AND SEALED CONSTRUCTION DRAWINGS (DATED 19 NOV. 2009) PLEASE CONTACT THE ENGINEER OF RECORD AT THE ADDRESS SHOWN BELOW. ALTERATION OF A SEALED DOCUMENT WITHOUT PROPER NOTIFICATION TO THE RESPONSIBLE ENGINEER IS AN OFFENSE UNDER THE TEXAS ENGINEERING PRACTICE ACT.

RICE & GARDNER CONSULTANTS INC.  
TX PE FIRM F-9057



RICE & GARDNER CONSULTANTS, INC.  
6161 Savoy Drive, Suite 1212  
Houston, TX. 77036  
713.482.2300 tel  
713.482.2314 fax