

# PLUMBING FIXTURE SCHEDULE

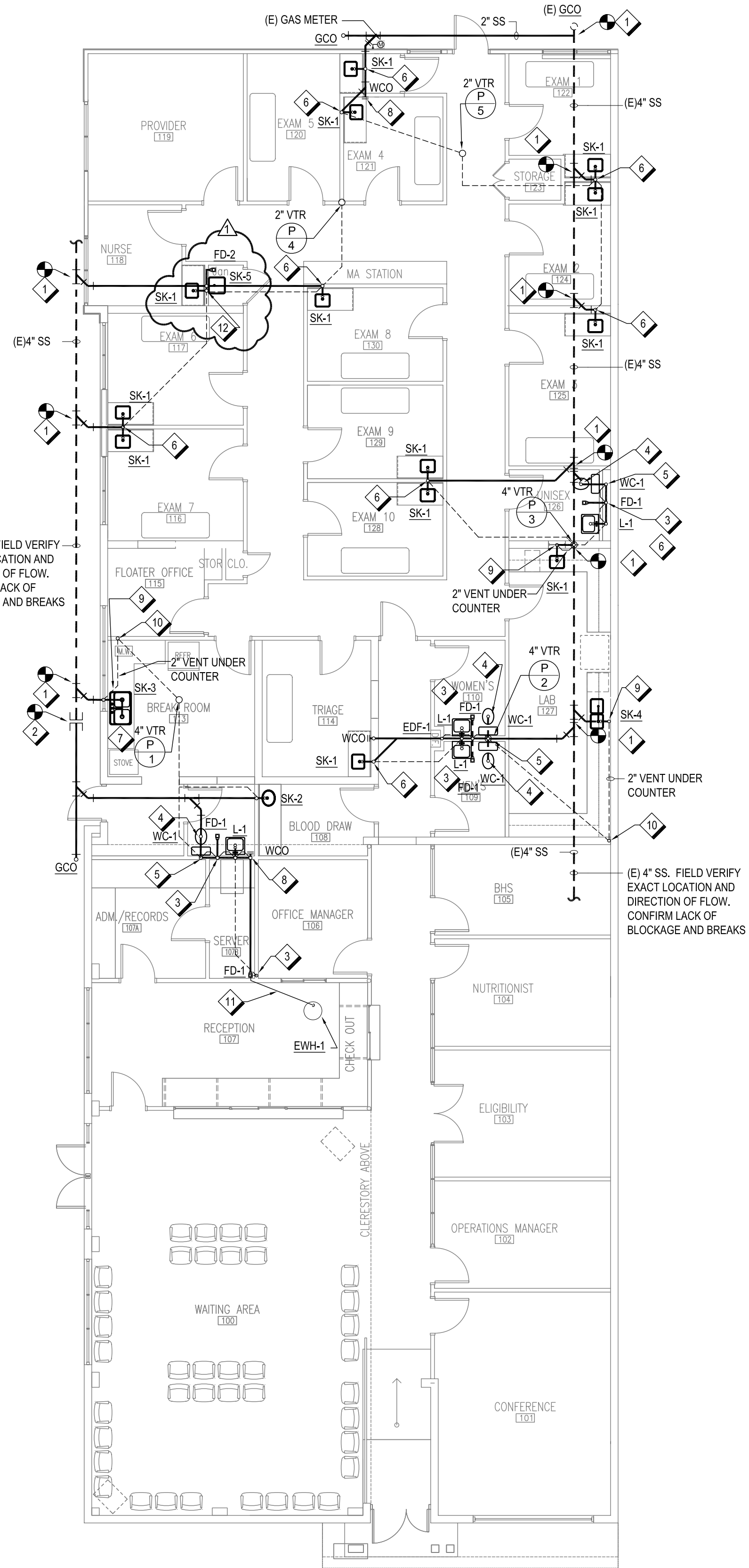
TYPE	FIXTURE	MANUFACTURER/MODEL	ACCESSORIES	FAUCET	ROUGH-IN'S	NOTES
WC-1	RIGHT HEIGHT, ELONGATED, FLOOR MOUNTED, FLUSH TANK TOILET, WHITE, 12" ROUGH-IN, HIGH EFFICIENCY, DUAL FLUSH	AMERICAN STANDARD FLOWISE #2490.216	SEAT: ELONGATED OPEN FRONT HIGH-IMPACT SOLID WHITE PLASTIC WITH STAINLESS CHECK HINGES WITHOUT COVER. TOT #SC-504	-	-	COLD WATER: 1" HOT WATER: -- SAN. SEWER: 4" VENT: 2"
L-1	WALL HUNG LAVATORY, HANDICAP HEIGHT, VITREOUS CHINA 15"x10" WITH OVERFLOW WITH CONCEALED ARM SUPPORTS, 3-HOLE PUNCHED FOR 4" CENTERS FAUCET.	AMERICAN STANDARD LUCERNE 0355.012	STRAINER: 1/2" 17GA. OFFSET WHEELCHAIR STRAINER, CHROME PLATED BRASS GRID DRAIN WITH ELBOW AND 17 GA. TAILPIECE. MCGUIRE #155WC CARRIER: RECTANGULAR STEEL UPRIGHTS WITH WELDED 4" SQUARE BASE ANCHORED TO CONCRETE WITH (4) 1/2" BOLTS, ADJUSTABLE SLEEVE, THREADED CONCEALED ARMS, ALIGNMENT BAR, LOCKING DEVICE, AND LEVELING SCREWS. WADE #W520-M36 OR EQUAL. SUPPLIES: 3/8" IPS 3/4" O.D. CHROME PLATED LOOSE KEY STOP VALVE WITH EUSTACION AND 1/4" COMPRESSION CHROME PLATED FLEXIBLE RISERS. MCGUIRE #216SLK. PROVIDE TRIM PLATES.	GOOSNECK FAUCET (CHICAGO 526-317CP) WITH DECK PLATE, 6" WRIST BLADE HANDLES, 2.2 GPM AERATOR, 4" CENTERS.	-	COLD WATER: 1/2" HOT WATER: 1/2" SAN. SEWER: 2" VENT: 1/2"
SK-1	SINGLE COMPARTMENT COUNTER-MOUNTED SINK, 20X17X6, 20 G #304 STAINLESS STEEL SELF-RIMMING 2-HOLE PUNCH 4" ON CENTER.	ELKAY LLVR2017	-	GOOSNECK FAUCET (CHICAGO 526-317CP) WITH DECK PLATE, 6" INDEXED WRIST BLADE HANDLES, 4" CENTERS, PVC TRAP AND TAIL PIECE, FLEXIBLE TUBE SUPPLIES, CHROME FINISH WALL EUSTACHEON PLATE, BASKET STRAINER, ANGLE STOPS. PROVIDE TRIM PLATES.	-	COLD WATER: 1/2" HOT WATER: 1/2" SAN. SEWER: 2" VENT: 1/2"
SK-2	SINGLE COMPARTMENT COUNTER MOUNTED SINK, 17X20X6, #304 STAINLESS STEEL SELF-RIMMING, 2-HOLE PUNCH 8" ON CENTER.	ELKAY LRAD1720	-	GOOSNECK FAUCET (CHICAGO 526-317CP) WITH DECK PLATE, 6" INDEXED WRIST BLADE HANDLES, 4" CENTERS, PVC TRAP AND TAIL PIECE, FLEXIBLE TUBE SUPPLIES, CHROME FINISH WALL EUSTACHEON PLATE, BASKET STRAINER, ANGLE STOPS. PROVIDE TRIM PLATES.	-	COLD WATER: 1/2" HOT WATER: 1/2" SAN. SEWER: 2" VENT: 1/2"
SK-3	DUAL COMPARTMENT COUNTER-MOUNTED SINK, 33x21x6 1/2", 20 G #304 STAINLESS STEEL SELF-RIMMING LEDGE, THOROUGHLY SOUND DEADENED, 3-HOLE PUNCH	ELKAY GECR-3321	CERAMIC DISK CARTRIDGE, 8" COVERPLATE, 3/2" STAINLESS STEEL BASKET STRAINER, 1/2" 17G CAST BRASS P-TRAP WITH CLEAN OUT, WALL CHROME FINISH, WALL EUSTACHEON PLATE, ANGLE STOPS AND FLEXIBLE TUBE SUPPLY. DISPOSER: IN-SINK-ERATOR BADGER 1/2 HP 120V/110	LOW PROFILE 8" SWING SPOUT, SINGLE LEVER HANDLE, 2.0 GALLON PER MINUTE AERATOR MAXIMUM FLOW, FOR 3 HOLE INSTALLATION. DELTA 400 WITH SPRAY ATTACHMENT	-	COLD WATER: 1/2" HOT WATER: 1/2" SAN. SEWER: 2" VENT: 2"
SK-4	DUAL COMPARTMENT COUNTER-MOUNTED SINK, 33x21x6 1/2", 20 G #304 STAINLESS STEEL SELF-RIMMING LEDGE, THOROUGHLY SOUND DEADENED, 3-HOLE PUNCH	-	CERAMIC DISK CARTRIDGE, 8" COVERPLATE, 3/2" STAINLESS STEEL BASKET STRAINER, 1/2" 17G CAST BRASS P-TRAP WITH CLEAN OUT, WALL CHROME FINISH, WALL EUSTACHEON PLATE, ANGLE STOPS AND FLEXIBLE TUBE SUPPLY.	LOW PROFILE 8" SWING SPOUT, SINGLE LEVER HANDLE, 2.0 GALLON PER MINUTE AERATOR MAXIMUM FLOW, FOR 3 HOLE INSTALLATION. DELTA 400 WITH SPRAY ATTACHMENT	-	COLD WATER: 1/2" HOT WATER: 1/2" SAN. SEWER: 2" VENT: 2"
SK-5	SERVICE SINK WALL HUNG PORCELAIN ENAMELLED (INSIDE ONLY) CAST IRON ROLL RIM SINK WITH 12" HIGH BACK, CONCEALED HANGER, CHROME PLATED STRAINER, STAINLESS STEEL RIM GUARD, CAST IRON P-TRAP WITH ADJUSTABLE FLOOR FLANGE	ELKAY	5 FEET OF 1/2 INCH DIAMETER PLAIN END REINFORCED RUBBER HOSE, HOSE CLAMP HANGER AND MOP HANGER	EXPOSED WALL TYPE SUPPLY WITH CROSS HANDLES, SPOUT WALL BRACE, VACUUM BREAKER, HOSE END SPOUT, STRAINERS, ECCENTRIC ADJUSTABLE INLETS, INTEGRAL SCREWDRIWER STOPS WITH COVERING CAPS AND ADJUSTABLE THREADED WALL FLANGES.	-	COLD WATER: 1/2" HOT WATER: 1/2" SAN. SEWER: 3" VENT: 1/2"
EDF-1	ELECTRIC WATER COOLER, ADA COMPLIANT, WALL MOUNTED, STANDARD GREY BEIGE FINISH, 120 VOLTS, MOUNT BUBBLER AT 35-3/8" ABOVE FLOOR.	HALSEY TAYLOR HAC8FSBL-Q-SS	PROVIDE FILTER WHEN MAKING FINAL CONNECTION, AQUA-PURE # AP717	-	-	COLD WATER: 1/2" HOT WATER: -- SAN. SEWER: 2" VENT: 2"
FD-1	ROUND CAST IRON BODY WITH FLASHING COLLAR, 6" ROUND NICKEL BRONZE ADJUSTABLE STRAINER HEAD WITH SECURED SQUARE HOLED GRATE, BOTTOM WASTE OUTLET AND TRAP PRIMER CONNECTION	ZURN #FD-2320-ST-P-CP	PROVIDE TRAP PRIMER "TP-1" FOR TRAP SEAL PROTECTION	-	-	COLD WATER: -- HOT WATER: -- SAN. SEWER: 3" VENT: 2"
FOO	PVC FLOOR CLEANOUT WITH THREADED ADJUSTABLE TOP HOUSING, FERRULE WITH POLYPROPYLENE PLUG AND SATIN NICKEL BRONZE SECURED SCORRIATE ROUND TOP	SOUIX CHIEF #852-XPNR2	-	-	-	RE: FLOOR PLANS
WCO	PVC FERRULE WALL CLEANOUT WITH POLYPROPYLENE COUNTERSUNK PLUG AND 16GA, 6"Ø STAINLESS STEEL SECURED SMOOTH ACCESS COVER WITH STAINLESS STEEL SECURITY SCREWS.	PLUG: SIOUX CHIEF #585-43YS COVER: SIOUX CHIEF #870-96V	-	-	-	RE: FLOOR PLANS
GCO	GRADE CLEANOUT, CAST IRON FLOOR CLEANOUT WITH THREADED ADJUSTABLE HOUSING, FERRULE WITH PLUG, TRACTOR TOP, AND VANDAL PROOF SCREWS	WADE #H-6000-Z-5	-	-	-	RE: FLOOR PLANS
RVB-1	REFRIGERATOR VALVE BOX, 10 1/2"x9" 16GA. STEEL WITH EPOXY FINISH, 1/4" O.D. SWEAT CONNECTION.	GUY GRAY #BIM-875	PROVIDE FILTER WHEN MAKING FINAL CONNECTION, AQUA-PURE # AP717	-	-	COLD WATER: 1/2" HOT WATER: -- SAN. SEWER: -- VENT: --
TP-1	ELECTRONIC TRAP PRIMER, PANEL MOUNT IN RESTROOM OR ABOVE ACCESSIBLE CEILING	PRECISION PLUMBING PRODUCTS MINI-TIME #MPB-500-115V	-	-	-	COLD WATER: 1/2" HOT WATER: -- SAN. SEWER: -- VENT: --
FD-2	ROUND CAST IRON BODY WITH FLASHING COLLAR, 6" ROUND NICKEL BRONZE ADJUSTABLE STRAINER HEAD WITH SECURED SQUARE HOLED GRATE WITH FUNNEL, BOTTOM WASTE OUTLET AND TRAP PRIMER CONNECTION	ZURN #FD-2320-ST-P-CP	PROVIDE TRAP PRIMER "TP-1" FOR TRAP SEAL PROTECTION	-	-	COLD WATER: -- HOT WATER: -- SAN. SEWER: 3" VENT: 2"

**PLUMBING FIXTURE KEYED NOTES:**

- A.D.A. AND T.A.S. COMPLIANT
- FLUSH LEVER SHALL BE MOUNTED ON THE WIDE SIDE OF TOILET AREA, NO MORE THAN 44" ABOVE THE FLOOR. PROVIDE WITH "SELECTRONIC FLOWISE" ULTRA-LOW FLOW FLUSH VALVE.
- P-TRAP: 1/2" 17GA, CHROME PLATED HEAVY CAST BRASS TRAP (U.O.N.) WITH CLEAN-OUT, TAIL PIECE, EXTENSION TO WALL WITH ESCUTACHEON PLATE. MCGUIRE #8872
- PROVIDE TRUEBRO "HANDICAP" INSULATION KITS ON ALL LAVATORIES AND SINKS REQUIRING HANDICAP ACCESSIBILITY.
- PROVIDE SHOCK ARRESTORS WITH ACCESS.

**PLUMBING FIXTURE GENERAL NOTES:**

ALL FIXTURES SHALL COMPLY WITH STATE ACCESSIBILITY STANDARDS.



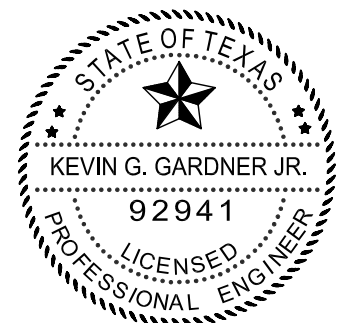
**2 PLUMBING FLOOR PLAN - NEW**  
Scale: 1/8" = 1'-0"

**KEYED NOTES**

- |  |  |
|--|--|
| 1 CONNECT (N)SANITARY SEWER TO (E)SANITARY SEWER.  | 7 PROVIDE DISHWASHER CONNECTION AT KITCHEN SINK. |
| 2 EXTEND (E)SANITARY SEWER AS REQUIRED.  | 8 SANITARY SEWER UP IN WALL (FULL SIZE) TO WCO.  |
| 3 3" WASTE/VENT FROM FD-1 TO NEAREST WALL. 3" WASTE DOWN AND 2" VENT UP.   | 9 2" WASTE DOWN TO SANITARY SEWER.               |
| 4 4" WATER CLOSET COLLAR. COORDINATE EXACT LOCATION WITH WATER CLOSET SPECIFICATION. 4" WASTE TO SANITARY SEWER. | 10 2" VENT UP IN WALL.                           |
| 5 4" WASTE DOWN; 3" VENT UP AT WALL.   | 11 WATER HEATER RELIEF DRAIN TO FD-1.            |
| 6 2" WASTE DOWN; 2" VENT UP IN WALL.   | 12 3" WASTE DOWN AND 2" VENT UP.                 |

THIS DOCUMENT HAS BEEN REPRODUCED ELECTRONICALLY AT THE REQUEST OF EL CENTRO DE CORAZÓN CANAL ST. FOR REFERENCE USE ONLY. THE SEAL APPEARING ON THIS DOCUMENT WAS AUTHORIZED BY KEVIN G. GARDNER JR. P.E. 92941 ON 19 NOV. 2009. TO RECEIVE REPRODUCTIONS OF THE ORIGINAL, SIGNED AND SEALED CONSTRUCTION DRAWINGS (DATED 19 NOV 2009) PLEASE CONTACT THE ENGINEER OF RECORD AT THE ADDRESS SHOWN BELOW. ALTERATION OF A SEALED DOCUMENT WITHOUT PROPER NOTIFICATION TO THE RESPONSIBLE ENGINEER IS AN OFFENSE UNDER THE TEXAS ENGINEERING PRACTICE ACT.

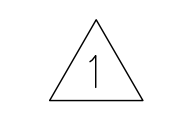
RICE & GARDNER CONSULTANTS INC.  
TX PE FIRM F-9057



RICE & GARDNER CONSULTANTS, INC.  
6161 Savoy Drive, Suite 1212  
Houston, TX. 77036  
713.482.2300 tel  
713.482.2314 fax

**GENERAL NOTES**

REVISIONS  
NOVEMBER 18, 2009



EL CENTRO DE CORAZÓN CANAL ST.  
7635 CANAL ST.  
HOUSTON, TEXAS 77012

100% CONSTRUCTION DOCUMENTS

deborah morris studios  
2101 Winter Street, Suite 7  
Houston, Texas 77007  
713 869 2231

PROJECT ISSUED FOR PERMIT  
OCTOBER 20, 2009

TITLE  
FLOOR PLAN

SHEET

P-2