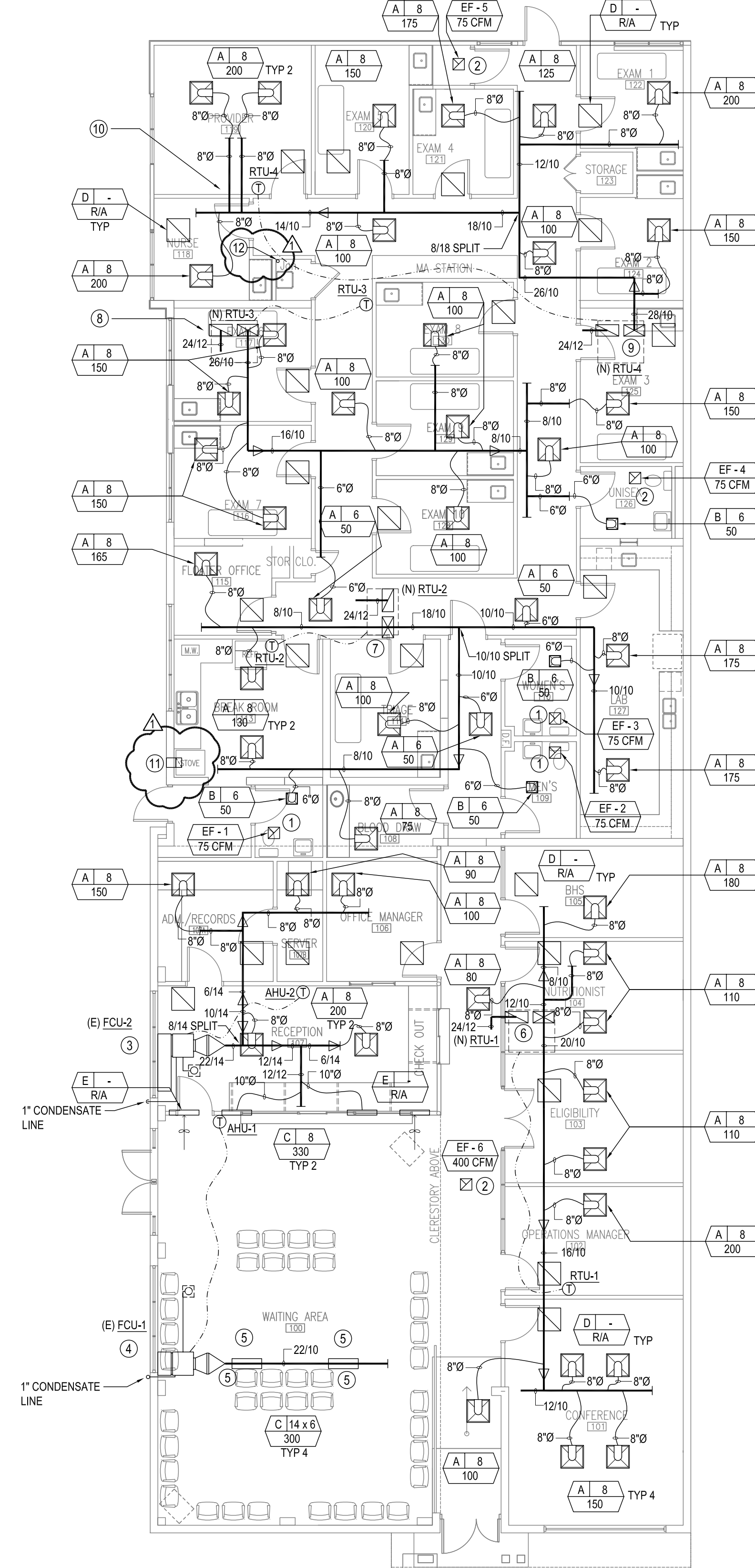


1 MECHANICAL FLOOR PLAN - DEMOLITION
SCALE: 1/8" = 1'-0"

KEYED NOTES:

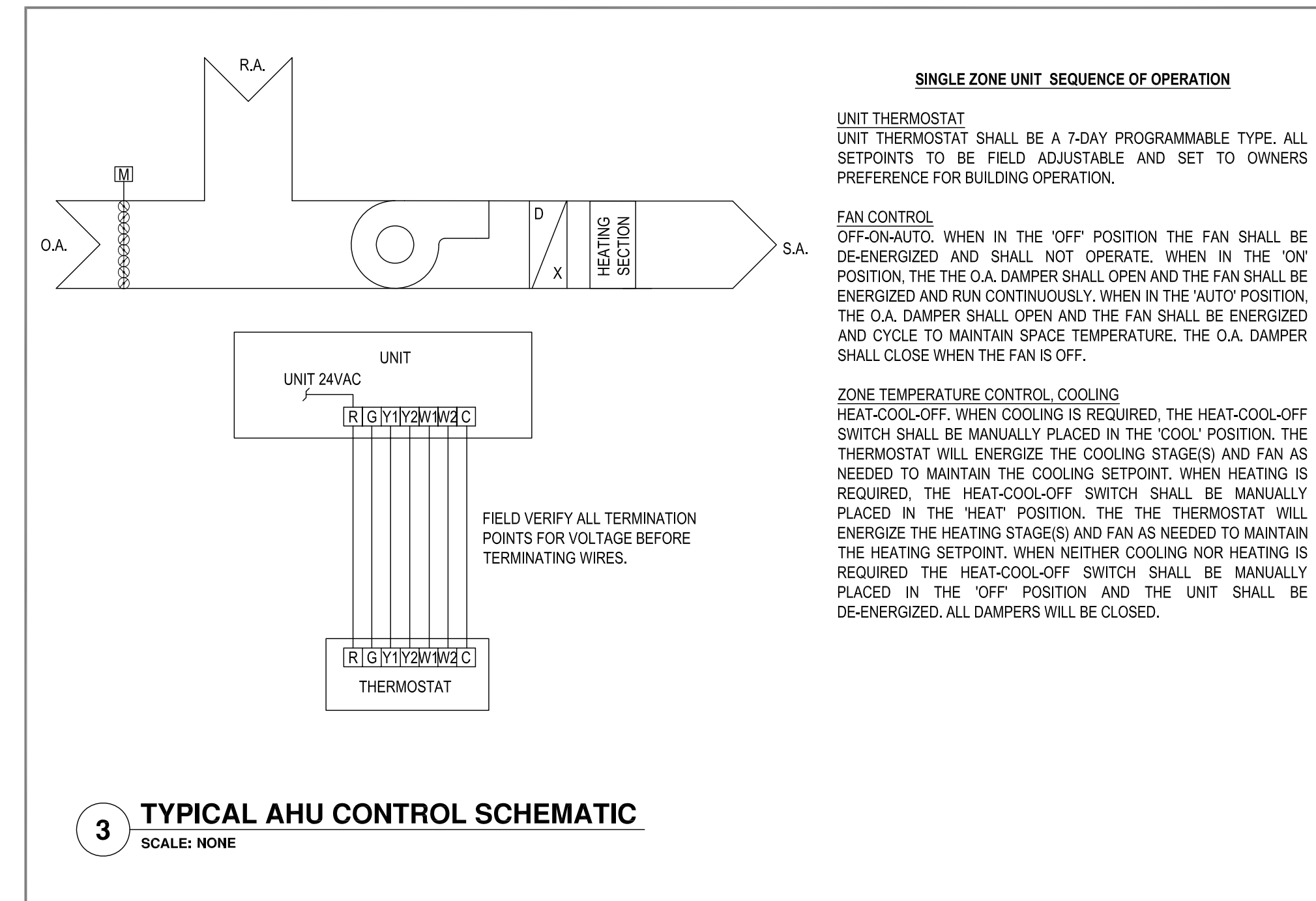
- 1 EXISTING AIR HANDLING UNIT TO BE RELOCATED. DISCONNECT AND REMOVE EXISTING CONTROLS, SUPPORTS, HANGERS, CONDENSATE LINE AND ASSOCIATED DUCTWORK.
- 2 DISCONNECT AND REMOVE ALL EXISTING DUCTWORK, HANGERS AND GRILLES.
- 3 DISCONNECT AND REMOVE EXISTING EXHAUST FANS AND ALL ASSOCIATED DUCTWORK, CONTROLS AND HANGERS. REPAIR ROOF OPENING TO MATCH EXISTING.
- 4 REMOVE EXISTING DUCT AND ASSOCIATED ROOF CAP. SEAL OPENING WEATHER TIGHT IN PREPARATION FOR NEW ROOF TOP UNIT INSTALLATION.
- 5 DISCONNECT AND REMOVE EXISTING EXHAUST DUCTS AND ASSOCIATED ROOF CAP. REPAIR ROOF OPENING TO MATCH EXISTING.
- 6 SEAL WALL PENETRATIONS TO MATCH EXISTING WALL.
- 7 REMOVE EXISTING WATER HEATER FLUE AND ASSOCIATED ROOF CAP. SEAL OPENING WEATHER TIGHT IN PREPARATION FOR NEW ROOF TOP UNIT INSTALLATION.
- 8 EXISTING AIR HANDLING UNIT TO REMAIN. DISCONNECT AND REMOVE ASSOCIATED CONTROLS AND SUPPLY DUCTWORK.
- 9 DISCONNECT AND REMOVE EXISTING CONDENSATE LINE AND ALL HANGERS.
- 10 EXISTING CONDENSATE LINE TO REMAIN.



2 MECHANICAL FLOOR PLAN - NEW
SCALE: 1/8" = 1'-0"

KEYED NOTES:

- 1 INTERLOCK EXHAUST FANS EF-1, EF-2 AND EF-3 AND 4 WITH TOILET LIGHTING. REFER TO ELECTRICAL ROUTE AND CONNECT EXHAUST DUCT TO NEW EXHAUST HOODS.
- 2 EXHAUST FAN EF-5 AND EF-6 TO RUN CONTINUOUSLY. ROUTE AND CONNECT EXHAUST DUCT TO NEW EXHAUST HOODS.
- 3 RELOCATE FCU-2 TO THIS APPROXIMATE LOCATION. RECONNECT TO EXISTING CONDENSING UNIT ON ROOF. ROUTE NEW OUTSIDE AIR DUCT WITH MOTORIZED DAMPER TO NEW INTAKE HOOD. PROVIDE NEW RETURN DUCT IN HORIZONTAL. PROVIDE NEW 1" CONDENSATE DRAIN. RE: DETAIL 5, SHEET M-3.
- 4 FCU-1 TO REMAIN. CONNECT NEW SUPPLY DUCT DUCT AS SHOWN. ROUTE NEW OUTSIDE AIR DUCT WITH MOTORIZED DAMPER TO NEW INTAKE HOOD.
- 5 DUCT MOUNTED SUPPLY DIFFUSER. RE: DETAIL 2, SHEET M-4.
- 6 22" x 12" SUPPLY PLENUM, 24" x 12" RETURN PLENUM UP THRU ROOF TO RTU - 1. TRANSITION IN VERTICAL AS REQUIRED TO UNIT CONNECTION SIZE. RE: DETAIL 6, SHEET M-3.
- 7 18" x 12" SUPPLY PLENUM, 20" x 12" RETURN PLENUM UP THRU ROOF TO RTU - 2. TRANSITION IN VERTICAL AS REQUIRED TO UNIT CONNECTION SIZE. RE: DETAIL 6, SHEET M-3.
- 8 28" x 10" SUPPLY DUCT, 22" x 12" RETURN PLENUM UP THRU ROOF TO RTU - 3. TRANSITION IN VERTICAL AS REQUIRED TO UNIT CONNECTION SIZE. RE: DETAIL 6, SHEET M-3.
- 9 28" x 10" SUPPLY DUCT, 24" x 12" RETURN PLENUM UP THRU ROOF TO RTU - 4. TRANSITION IN VERTICAL AS REQUIRED TO UNIT CONNECTION SIZE. RE: DETAIL 6, SHEET M-3.
- 10 SPIN-IN CONNECTION AND MANUAL VOLUME DAMPER, TYPICAL. RE: DETAIL 4, SHEET M-3.
- 11 HOOD EXHAUST DUCT WITH WALL CAP. DUCT SHALL PENETRATE EXTERIOR WALL AS HIGH AS POSSIBLE. DUCT SIZE SHALL BE EQUAL TO DUCT COLLAR FOR HOOD SELECTED FOR INSTALLATION.
- 12 1" CONDENSATE DRAIN DOWN WALL FROM ROOF. TERMINATE AT FLOOR DRAIN. MINIMUM 1" AIR GAP REQUIRED. RE: PLUMBING DRAWINGS FOR FLOOR SINK.



3 TYPICAL AHU CONTROL SCHEMATIC
SCALE: NONE

SINGLE ZONE UNIT SEQUENCE OF OPERATION

UNIT THERMOSTAT
UNIT THERMOSTAT SHALL BE A 7-DAY PROGRAMMABLE TYPE. ALL SETPOINTS TO BE FIELD ADJUSTABLE AND SET TO OWNERS PREFERENCE FOR BUILDING OPERATION.

FAN CONTROL
OFF-ON-AUTO. WHEN IN THE 'OFF' POSITION THE FAN SHALL BE DE-ENERGIZED AND SHALL NOT OPERATE. WHEN IN THE 'ON' POSITION, THE O.A. DAMPER SHALL OPEN AND THE FAN SHALL BE ENERGIZED AND RUN CONTINUOUSLY. WHEN IN THE 'AUTO' POSITION, THE O.A. DAMPER SHALL OPEN AND THE FAN SHALL BE ENERGIZED AND CYCLE TO MAINTAIN SPACE TEMPERATURE. THE O.A. DAMPER SHALL CLOSE WHEN THE FAN IS OFF.

ZONE TEMPERATURE CONTROL COOLING
HEAT-COOL-OFF. WHEN COOLING IS REQUIRED, THE HEAT-COOL-OFF SWITCH SHALL BE MANUALLY PLACED IN THE 'COOL' POSITION. THE THERMOSTAT WILL ENERGIZE THE COOLING STAGE(S) AND FAN AS NEEDED TO MAINTAIN THE COOLING SETPOINT. WHEN HEATING IS REQUIRED, THE HEAT-COOL-OFF SWITCH SHALL BE MANUALLY PLACED IN THE 'HEAT' POSITION. THE THERMOSTAT WILL ENERGIZE THE HEATING STAGE(S) AND FAN AS NEEDED TO MAINTAIN THE HEATING SETPOINT. WHEN NEITHER COOLING NOR HEATING IS REQUIRED THE HEAT-COOL-OFF SWITCH SHALL BE MANUALLY PLACED IN THE 'OFF' POSITION AND THE UNIT SHALL BE DE-ENERGIZED. ALL DAMPERS WILL BE CLOSED.

FIELD VERIFY ALL TERMINATION POINTS FOR VOLTAGE BEFORE TERMINATING WIRES.

REVISIONS
NOVEMBER 18, 2009

EL CENTRO DE CORAZÓN CANAL ST.
7635 CANAL ST.
HOUSTON, TEXAS 77012

100% CONSTRUCTION DOCUMENTS

deborah morris studios
2101 Winter Street, Suite 7
Houston, Texas 77007
713.989.2231

PROJECT ISSUED FOR PERMIT
OCTOBER 20, 2009
TITLE
MECHANICAL FLOOR PLANS
SHEET

THIS DOCUMENT HAS BEEN REPRODUCED ELECTRONICALLY AT THE REQUEST OF EL CENTRO DE CORAZÓN CANAL ST. FOR REFERENCE USE ONLY. THE SEAL APPEARING ON THIS DOCUMENT WAS AUTHORIZED BY RICHARD ROGER GLENN, P.E. 86256 ON 19 NOV. 2009. TO RECEIVE REPRODUCTIONS OF THE ORIGINAL SIGNED AND SEALED CONSTRUCTION DRAWINGS (DATED: 13 NOV. 2009) PLEASE CONTACT THE ENGINEER OF RECORD AT THE ADDRESS SHOWN. ALTERATION OF A SEALED DOCUMENT WITHOUT PROPER NOTIFICATION TO THE RESPONSIBLE ENGINEER IS AN OFFENSE UNDER THE TEXAS ENGINEERING PRACTICE ACT.



RICE & GARDNER CONSULTANTS, INC.
6161 Savoy Drive, Suite 1212
Houston, TX 77036
713.482.2300 tel
713.482.2314 fax

M-1