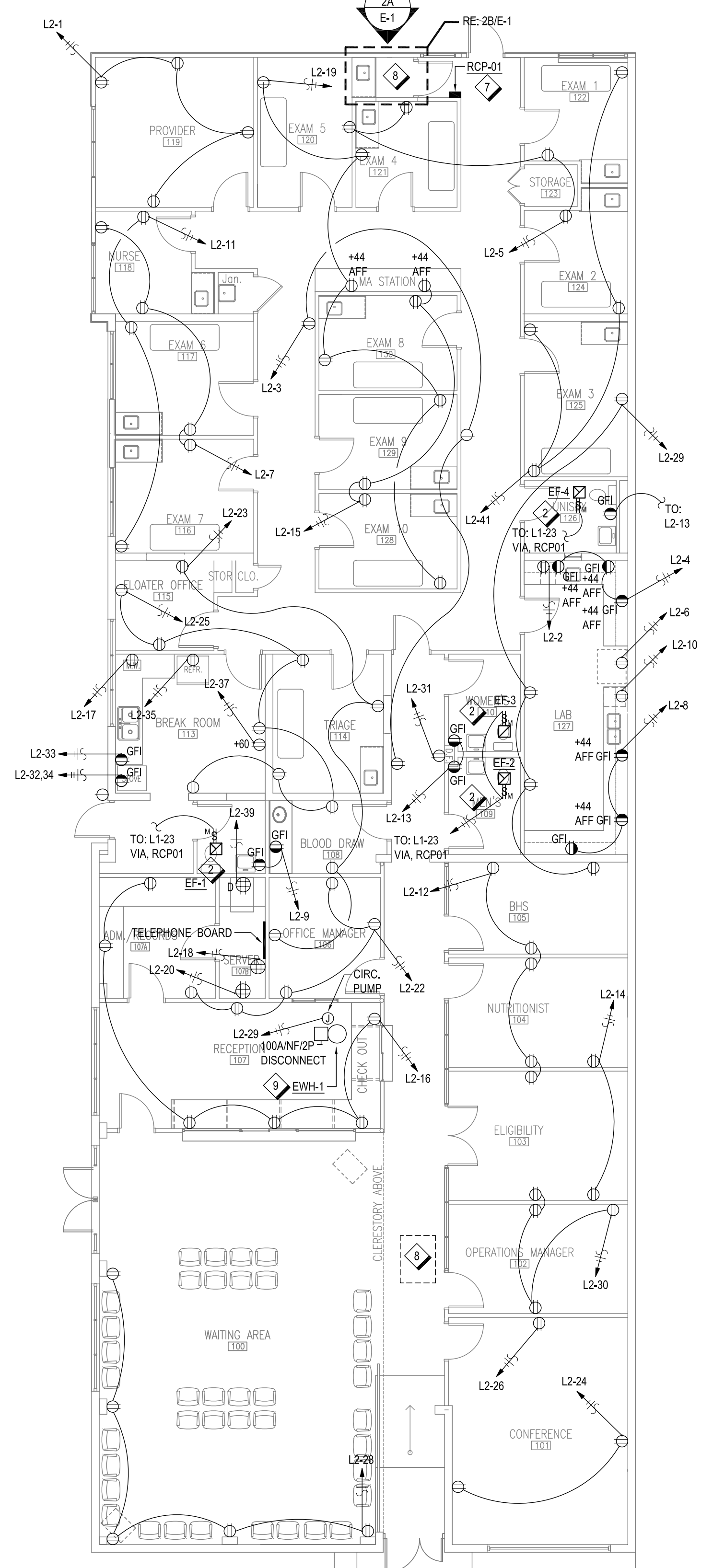


1 LIGHTING FLOOR PLAN - NEW
Scale: 1/8" = 1'-0"



2 POWER FLOOR PLAN - NEW
Scale: 1/8" = 1'-0"

RECEPTACLE NOTE:
THE GROUNDING TERMINALS OF ALL RECEPTACLES AND ALL NON-CURRENT CARRYING CONDUCTIVE SURFACES OF FIXED ELECTRICAL EQUIPMENT SHALL BE CONNECTED TO AN INSULATED #12 AWG COPPER EQUIPMENT GROUNDING CONDUCTOR PER NEC 517.13(B) AND SHALL HAVE A GROUNDED RACEWAY SYSTEM PER NEC 517.13(A).

- ELECTRICAL ROOM KEYED NOTES - NEW**
- EXISTING SERVICE GUTTER TO REMAIN.
 - NEW DISCONNECT SWITCH FOR WATER HEATER WH-1 RE: 1/E-4 FOR ONE-LINE DIAGRAM
 - NEW PANEL L2. RE: 1/E-4 FOR ONE-LINE DIAGRAM
 - EXISTING 100A DISCONNECT SERVING FCU#1 TO REMAIN.
 - EXISTING 100A DISCONNECT SERVING FCU#2 TO REMAIN.
 - EXISTING PANEL L1 TO REMAIN.

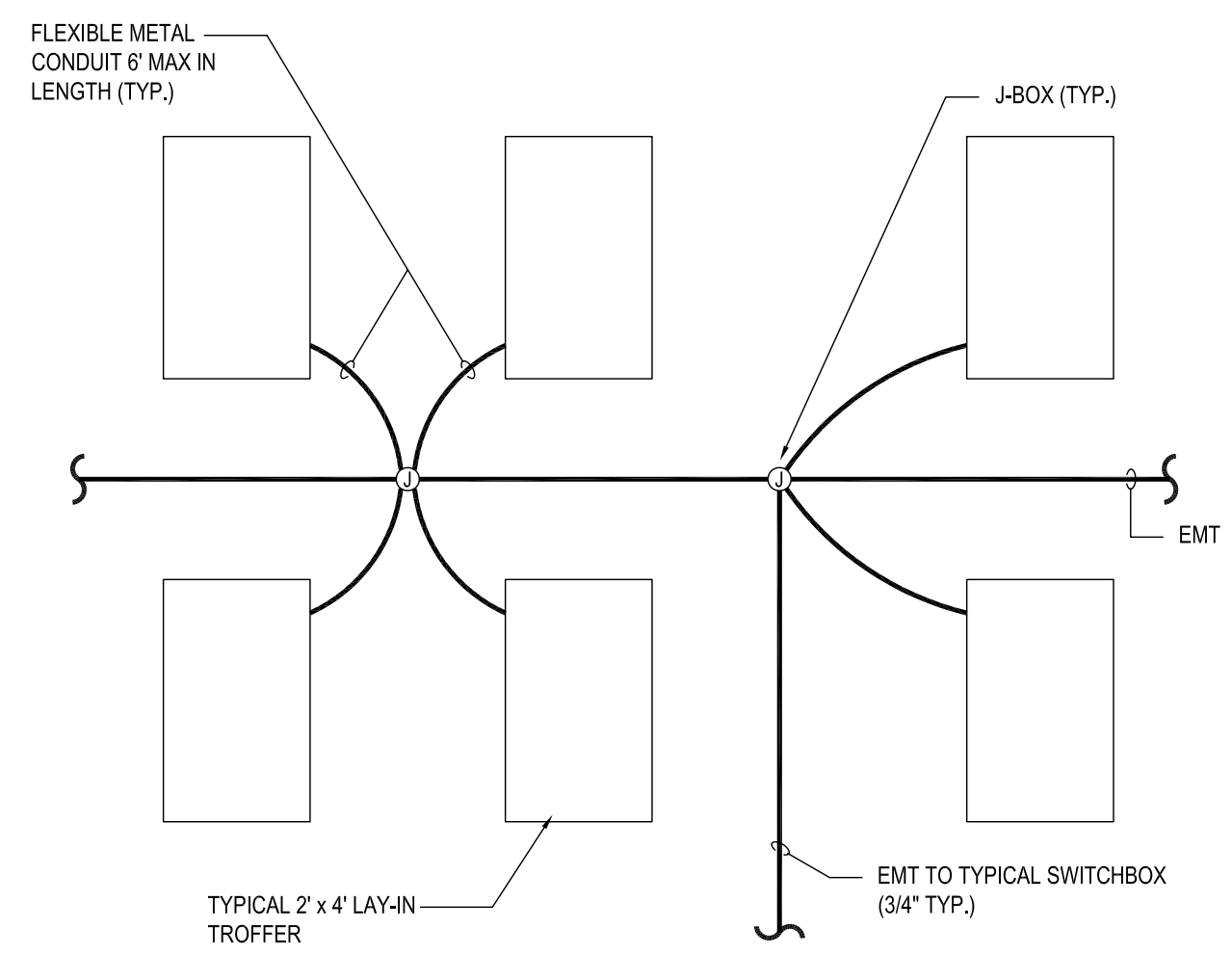
2B ENLARGED ELECTRICAL ROOM - NEW
Scale: 1/4" = 1'-0"

LIGHTING FIXTURE SCHEDULE

KEY	MANUFACTURER MODEL	LAMP NO./WATTAGE	TYPE	VOLTAGE	MOUNTING TYPE	COMMENTS
A2	FINELITE HPR-2-2X4-2T8-DCO-SC-120-C1-PS	2/17	T8U 4100K	120V	RECESSED	HIGH PERFORMANCE RECESSED 2' X 2' FLUORESCENT FIXTURE, WHITE REFLECTOR, FROSTED PLASTIC ANGLED SIDE LENSES AND FROSTED .080 CENTER LENS
A2	FINELITE HPR-2-2X4-2T8-DCO-SC-120-C1-PS	2/17	T8U 4100K	120V	RECESSED	HIGH PERFORMANCE RECESSED 2' X 2' FLUORESCENT FIXTURE, WHITE REFLECTOR, FROSTED PLASTIC ANGLED SIDE LENSES AND FROSTED .080 CENTER LENS PROVIDE WITH 90 MINUTE BATTERY BACK-UP (1300 LUMEN), AND NIGHT LIGHT FEATURE.
B2	FINELITE HPR-2-2X4-2T8-DCO-SC-120-C1-PS	2/32	T8 5000K	120V	RECESSED	HIGH PERFORMANCE RECESSED 2' X 4' FLUORESCENT FIXTURE, WHITE REFLECTOR, FROSTED PLASTIC ANGLED SIDE LENSES AND FROSTED .080 CENTER LENS.
B2	FINELITE HPR-2-2X4-2T8-DCO-SC-120-C1-PS	2/32	T8 5000K	120V	RECESSED	HIGH PERFORMANCE RECESSED 2' X 4' FLUORESCENT FIXTURE, WHITE REFLECTOR, FROSTED PLASTIC ANGLED SIDE LENSES AND FROSTED .080 CENTER LENS. PROVIDE WITH 90 MINUTE BATTERY BACK-UP (1300 LUMEN), AND NIGHT LIGHT FEATURE.
B3	FINELITE HPR-2-2X4-3T8-DCO-SC-120-C1-PS	3/32	T8 5000K	120V	RECESSED	HIGH PERFORMANCE RECESSED 2' X 4' FLUORESCENT FIXTURE, WHITE REFLECTOR, FROSTED PLASTIC ANGLED SIDE LENSES AND FROSTED .080 CENTER LENS.
C	PEERLESS: 10CRM8-232-5/95-12R12-120 GEB10-25E-EN SCT LP735F3-18 C041	2/32	3-F32T8 3500K	120V	SUSPEND 11'-0" AFF	10" X 3" INDIRECT/DIRECT WITH WHITE POLYESTER POWDER CENTER REFLECTOR AND STRAIGHT BLADE BAFFLES WITH PERFORATED SIDE REFLECTOR.
CE	SAME AS "C" EXCEPT PROVIDE WITH EMERGENCY BALLAST	2/32	3-F32T8 3500K	120V	SUSPEND 11'-0" AFF	10" X 3" INDIRECT/DIRECT WITH WHITE POLYESTER POWDER CENTER REFLECTOR AND STRAIGHT BLADE BAFFLES WITH PERFORATED SIDE REFLECTOR.
D	LITHONIA S-1-17W-277-GEB10IS	1/17	1-F17T8	120V	SURFACE	STANDARD STRIP LINEAR FLUORESCENT
F	KICHLER 12014WH	1/5	20W BI-PIN XENON	120V	SURFACE	DIRECT WIRE 120V XENON-4LTG LINE VOLTAGE XENON UNDER CABINET LUMINAIRE.
G	LITHONIA LIGHTING WVC217120GEB10IS	2/17	17W T8	120V	SURFACE	24" WALL MOUNTED FLUORESCENT FIXTURE WITH LOW BRIGHTNESS MATTE WHITE OPAL ACRYLIC DIFFUSER.
X	LITHONIA LOM-S-W-3-R-120/277	0.69W	LED	120V	CEILING	THERMOPLASTIC EXIT LIGHT. ARROWS AND NUMBER OF FACES AS INDICATED ON FLOOR PLAN.
X2	LITHONIA LIGHTING AFN DB EXT	2/6W	ZENON	120V	WALL ABOVE DOOR	EMERGENCY LIGHT RATED FOR WET LOCATIONS. COORDINATE EXACT LOCATION WITH ARCHITECT / OWNER PRIOR TO INSTALLATION. EMERGENCY LIGHT ONLY.
S	LEVITON OSSMT-GDW-120V			120V	WALL	WALL MOUNTED OCCUPANCY SENSOR.

ELECTRICAL KEYED NOTES

- FURNISH AND INSTALL NEW LINE VOLTAGE 120V, 20A WALL MOUNTED MULTI-TECHNOLOGY OCCUPANCY SENSOR SWITCH. OCCUPANCY SENSOR TYPE WITH AUTO-ON, AUTO-OFF, MANUAL OVERRIDE. COORDINATE AUTO SHUT-OFF TIME-OUT WITH OWNER.
- EXHAUST FAN ABOVE CEILING. REFER TO MECHANICAL DRAWINGS FOR EXACT LOCATION. PROVIDE MOTOR RATED SWITCH TO CONTROL BOTH LIGHTING AND EXHAUST FAN AS INDICATED.
- LOW VOLTAGE DIGITAL SWITCH-"A". LIGHTING CONTROL AND DESIGN MODEL# CHELSEA-CH-2-WH-WH (2-BUTTON CONTROL). WIRE SWITCH FOR MANUAL ON/OFF CONTROL OF ENTIRE RELAY CONTROL. RCP01. VERIFY LOCATION WITH ARCHITECT. REFER TO 02/E-4 FOR ADDITIONAL INFORMATION.
- UN-SWITCHED EMERGENCY NIGHT LIGHT. LIGHTS ARE TO BE WIRED SO THAT THE EMERGENCY/NIGHT LIGHT FIXTURE IS AN UN-SWITCHED NIGHT LIGHT. CONNECT EMERGENCY/NIGHT LIGHT BALLAST TO PANEL L1. CIRCUIT #36
- SWITCH SHALL CONTROL LIGHTING AND EXHAUST IN THIS ROOM. REFER TO SHEET E-2 FOR EXHAUST FAN LOCATION.
- ALL EXIT SIGNS AND EMERGENCY LUMINAIRES SHALL BE CONNECTED TO PANEL L1. CIRCUIT #36.
- NEW RELAY PANEL RCP-01. REFER TO E-4 FOR ADDITIONAL INFORMATION.
- ROOF MOUNTED EXHAUST FAN. RE: E-2
- NEW WATER HEATER ABOVE CEILING. REFER TO PLUMBING DRAWINGS FOR EXACT LOCATION. REFER TO ONE-LINE DIAGRAM 1/E-4 FOR ADDITIONAL INFORMATION.
- PROVIDE WALL MOUNTED FLUORESCENT FIXTURE ABOVE DOOR IN ELECTRICAL ROOM. PROVIDE UNSWITCHED HOT LEG TO BATTERY BACKED BALLAST.



3 CONDUIT/J-BOX DETAIL
Scale: N.T.S.

GENERAL NOTES

- ALL MATERIALS AND WORKMANSHIP SHALL CONFORM TO BASE BUILDING SPECIFICATIONS, LOCAL CODES AND ORDINANCES, AND INDUSTRY STANDARDS.
- CONTRACTOR MUST MARK ALL SWITCHES, THERMOSTATS, AND ADA STROBE LOCATION IN THE FIELD FOR REVIEW AND APPROVAL BY THE ARCHITECT BEFORE INSTALLATION. FAILURE TO DO SO WILL RESULT IN THE CONTRACTOR RELOCATING SUCH ITEMS WITHOUT ADDED EXPENSE TO THE OWNER, TENANT OR ARCHITECT.
- THE ARCHITECTURAL LIGHTING PLANS ARE TO BE USED FOR EXACT HEIGHTS AND LOCATIONS OF INTERIOR AND EXTERIOR LIGHTING FIXTURES. THE ELECTRICAL LIGHTING PLANS ARE TO BE USED FOR CIRCUITING AND POWER REQUIREMENTS. NOTIFY THE ARCHITECT OF ANY DISCREPANCIES BETWEEN THE ELECTRICAL AND ARCHITECTURAL LIGHTING PLANS AND OBTAIN CLARIFICATION BEFORE COMMENCING CONSTRUCTION.
- PROVIDE COMPLETE, TYPED CIRCUIT DIRECTORY CARDS FOR EVERY ELECTRICAL PANEL.
- PROVIDE #10 AWG CONDUCTORS FOR ALL 120V CIRCUITS OVER 75 FEET TO FIRST OUTLET.
- ALL ELECTRICAL FACE PLATES SHALL BE PLASTIC. OUTLETS AND SWITCHES SHALL BE WHITE UNLESS NOTED OTHERWISE.
- FOR MOUNTING HEIGHTS OF ELECTRICAL DEVICES, RE: DRAWING E-4.
- ALL EXTERIOR MOUNTED EQUIPMENT TO BE IN NEMA 3R RATED ENCLOSURES.
- CONTRACTOR SHALL FIELD VERIFY ALL EXISTING CONDITIONS PRIOR TO START OF CONSTRUCTION.
- ALL RECEPTACLES MOUNTED OUT OF DOORS TO BE WEATHERPROOF, GFCI.
- ALL PANELBOARDS SHALL HAVE CIRCUITS CLEARLY LABELED ACCORDING TO BUILDING AREA SERVED.
- ALL SIZE #10, #12, AND #14 AWG CONDUCTORS SHALL BE SOLID COPPER, SIZE #8 AWG AND LARGER CONDUCTORS SHALL BE STRANDED COPPER. INSULATION SHALL BE TYPE THHN, OR THWN.
- ALL DATA OR TELEPHONE CABLE INSTALLED IN THE RETURN AIR PLENUM SHALL BE PLENUM-RATED OR INSTALLED IN CONDUIT.
- ALL RECEPTACLES SHALL BE NEMA 5-20R UNLESS OTHERWISE NOTED.
- SEAL ALL CONDUITS OR DATA CABLE PENETRATIONS OF FIRE RATED CONSTRUCTION WITH FACTORY BUILT DEVICES OR WITH MANUFACTURED FILL, VOID, OR CAVITY MATERIALS "CLASSIFIED" BY UNDERWRITERS LABORATORIES, INC. FOR USE AS A THROUGH-PENETRATION FIRESTOP.
- LUMINAIRES SHALL BE SECURELY FASTENED TO THE FRAMING MEMBERS OF SUSPENDED CEILING SYSTEMS BY MECHANICAL MEANS, BOLTS, SCREWS OR RIVETS. LISTED CLIPS MUST BE IDENTIFIED FOR USE WITH TYPE OF CEILING AND LUMINAIRE TO BE PERMITTED. PROVIDE SUPPORT WIRES IN ADDITION TO CEILING GRID SUPPORT FOR LUMINAIRES TO ENSURE THEY ARE SECURELY FASTENED IN PLACE PER NEC 300.11.
- VERIFY ALL CEILING TYPES WITH ARCHITECTURAL DRAWINGS. FINAL LOCATION OF ALL SURFACE MOUNTED AND SUSPENDED DEVICES ARE TO BE VERIFIED WITH ARCHITECTURAL DRAWINGS AND / OR ARCHITECT PRIOR TO INSTALLATION.
- CONTRACTOR SHALL SECURE AND PAY FOR ALL REQUIRED PERMIT AND APPROVAL PRIOR TO CONSTRUCTION.
- ALL WORK SHALL BE IN ACCORDANCE WITH THE 2008 NATIONAL ELECTRICAL CODE.
- RECORD ALL CIRCUIT AND CIRCUIT NUMBERS ON AS-BUILT DRAWINGS AND LABEL ALL CIRCUITS ON PANEL DIRECTORIES. FIELD VERIFY BRANCH CIRCUIT AVAILABILITY.
- GANG ADJACENT SWITCHES OR OUTLETS TOGETHER UNDER A SINGLE COVERPLATE.

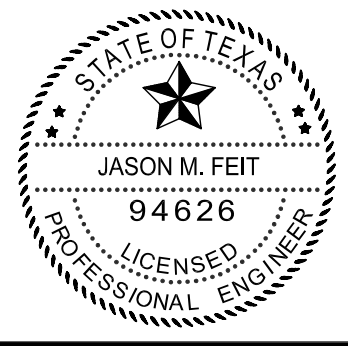
EL CENTRO DE CORAZÓN CANAL ST. 7635 CANAL ST. HOUSTON, TEXAS 77012

100% CONSTRUCTION DOCUMENTS

deborah morris studios 2101 Winter Street, Suite 7 Houston, Texas 77007
PROJECT ISSUED FOR PERMIT
OCTOBER 20, 2009
TITLE ELECTRICAL PLANS
SHEET



RICE & GARDNER CONSULTANTS, INC.
6161 Savoy Drive, Suite 1212
Houston, TX. 77036
713.482.2300 tel
713.482.2314 fax



THIS DOCUMENT HAS BEEN REPRODUCED ELECTRONICALLY AT THE REQUEST OF EL CENTRO DE CORAZÓN CANAL ST. FOR REFERENCE USE ONLY. THE SEAL APPEARING ON THIS DOCUMENT WAS AUTHORIZED BY JASON M. FEIT, P.E. 94626 ON 19 NOV 2009. TO RECEIVE REPRODUCTIONS OF THE ORIGINAL SIGNED AND SEALED CONSTRUCTION DRAWINGS (DATED 18 NOV 2009) PLEASE CONTACT THE ENGINEER OF RECORD AT THE ADDRESS SHOWN BELOW. ALTERATION OF A SEALED DOCUMENT WITHOUT PROPER NOTIFICATION TO THE RESPONSIBLE ENGINEER IS AN OFFENSE UNDER THE TEXAS ENGINEERING PRACTICE ACT.

RICE & GARDNER CONSULTANTS INC.
TX PE FIRM F-9057