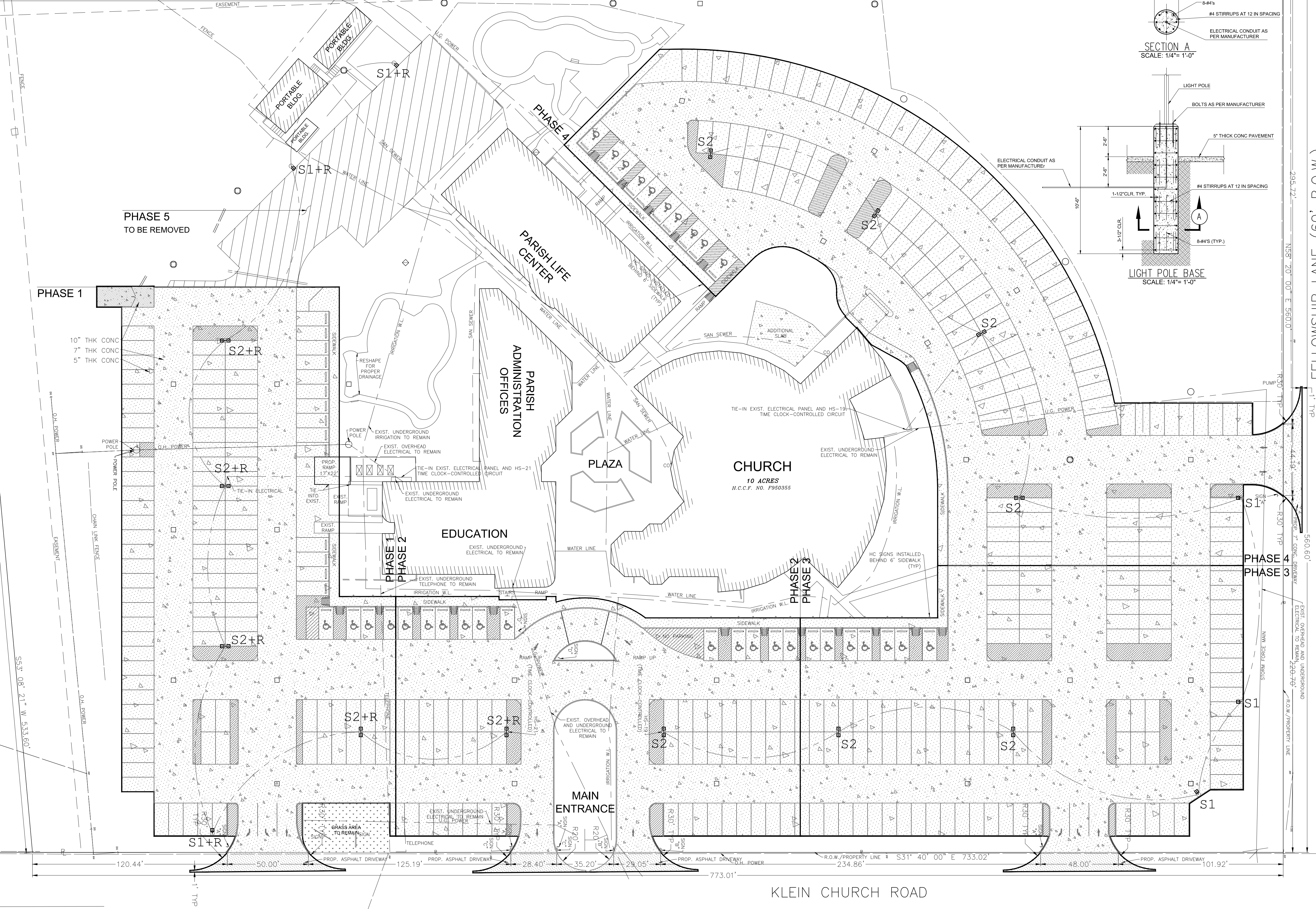


THIS DRAWING IS THE PROPERTY OF ENGINEERING & FACILITIES CONSULTING, INC. AND MAY NOT BE ALTERED, REPRODUCED, DISTRIBUTED AND/OR UTILIZED WITHOUT WRITTEN AUTHORIZATION.

Symbol	Qty	Label	Arrangement	Total Lamp Lumens	LLF	Description
[Symbol]	6	S1	SINGLE	N.A.	0.950	Gardco: ECF-S-48L-1A-NW-G2-AR-3 - Mounted on a 20' Pole w/ 30inØ and 30in high base
[Symbol]	12	S2	BACK-BACK	N.A.	0.950	Gardco: ECF-S-48L-1A-NW-G2-AR-3 - Mounted on a 20' Pole w/ 30inØ and 30in high base

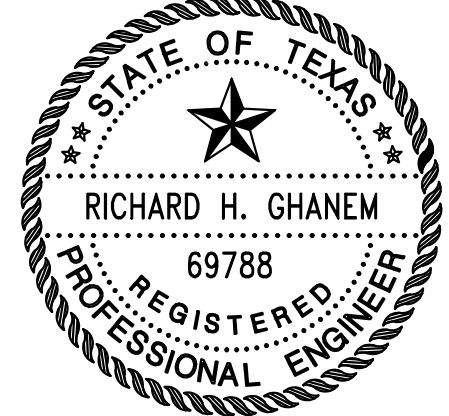
Label	CalcType	Units	Avg	Max	Min	Avg/Min	Max/Min
CalcPts_1	Illuminance	Fc	2.36	7.1	0.1	23.60	71.00



PROJECT:
Proposed Pavement Replacement
Christ the Good Shepherd
18511 Klein Church Road
Spring, Texas 77379

OWNER:
Christ the Good Shepherd
Archdiocese of Galveston-Houston
18511 Klein Church Road
Spring, Texas 77379
Rev. James Burkart, Pastor

ENGINEER:
 **Engineering & Facilities Consulting, Inc.**
 Firm Registration No. F-003940
 8203 Willow Place Dr. South, Suite 405 - Houston, TX 77070
 Ph: 281-894-2001; Fax: 281-894-2004
 Contact: Richard H. Ghanem, PE, President
 e-Mail: r.ghanem@efctx.com - Website: www.efctx.com


RICHARD H. GHANEM
 69788
 REGISTERED PROFESSIONAL ENGINEER
Richard Ghanem
 10/22/17

NO.	REVISIONS	DATE	NAME

LEGEND

	PROPOSED 5" CONCRETE PAVEMENT (PARKING SPACES AND SIDEWALKS)
	PROPOSED 7" CONCRETE PAVEMENT (DRIVE THRU AREAS AND DRIVEWAYS)
	PROPOSED 10" CONCRETE PAVEMENT (DUMPSTER PAD)
	PROPOSED WHEELSTOP
	PROPOSED 6" CURB
	PROPOSED MODIFIED MANHOLE
	PROPOSED MANHOLE
	PROPOSED STORM TYPE A INLET
	PROPOSED S1 LIGHT
	PROPOSED S2 LIGHT
	PROPOSED LIGHT WITH RECEPTACLE

UNDER GROUND UTILITY

	U.G. POWER		UG ELECTRICAL
	IRRIGATION W.L.		UG IRRIGATION
	SAN SEWER		UG SANITARY
	STM SEWER		UG STORM
	TELEPHONE		UG TELEPHONE
	WATER LINE		UG WATER
	ELEC. LIGHTING		ELECTRICAL LIGHTING
	O.H. POWER		OVER HEAD POWER
	6" PVC PIPE W/ CAP		UG 6" PVC PIPE

PROPOSED LIGHTING PLAN

SURVEYOR:	DESIGNED BY: LG
SCALE: 1"=30'	DRAWN BY: LG
DATE: 10/22/17	CHECKED BY: RHG
EFC PN: CIV-389-15	SHEET NO: E 1 OF 38