

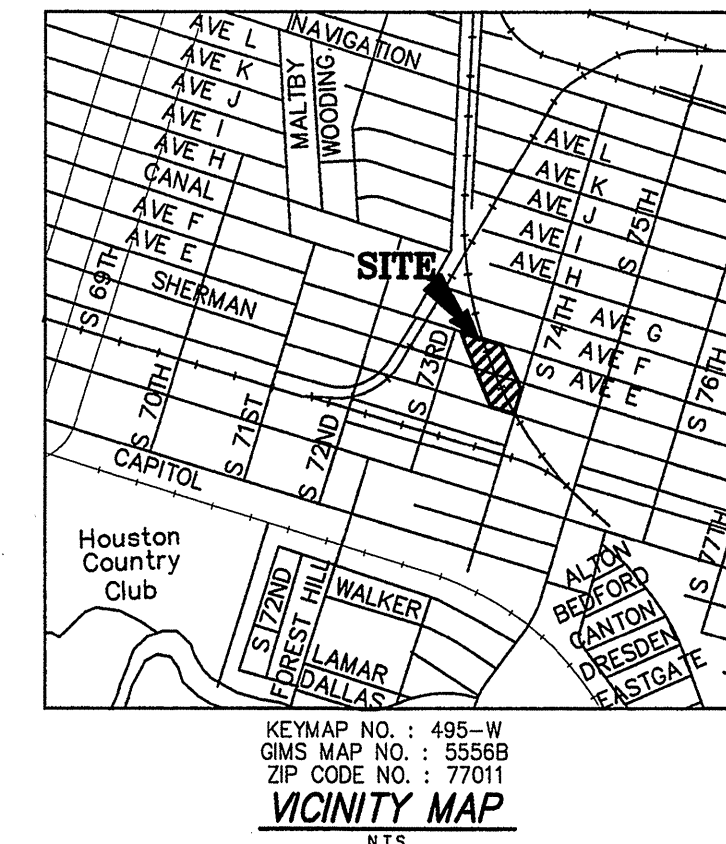
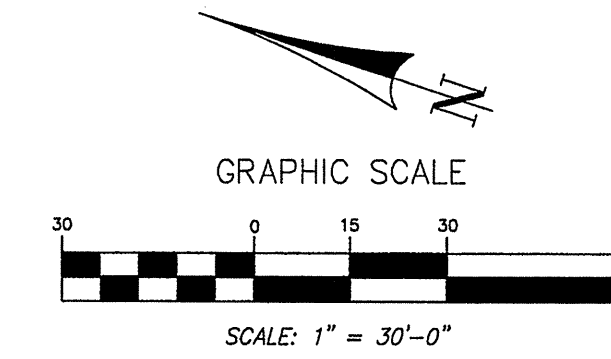
FLOODPLAIN NOTE
 SUBJECT TRACT LOCATED IN ZONE "X", AREAS OF 500-YEAR FLOOD; AREAS OF 100-YEAR FLOOD WITH AVERAGE DEPTHS OF LESS THAN 1-FOOT OR DRAINAGE AREAS LESS THAN 1 SQUARE MILE; AND AREAS PROTECTED BY LEVEES FROM 100-YEAR FLOOD AS DELINEATED ON FEDERAL EMERGENCY MANAGEMENT AGENCY FLOOD INSURANCE RATE MAP PANEL NO. 4820100885 J DATED NOVEMBER 6, 1996. ELEVATIONS WERE NOT OBTAINED ON SUBJECT TRACT.

TSARP FLOOD HAZARD INFORMATION IS EDUCATIONAL AND CANNOT BE USED TO DETERMINE FLOOD INSURANCE RATES OR STATUS. THIS INFORMATION IS SUBJECT TO CHANGE WITHOUT NOTICE AND MAY BE DIFFERENT THAN THE PRELIMINARY DFRMS WHEN THEY ARE RELEASED. THIS INFORMATION IS BEING MADE AVAILABLE TO THE PUBLIC TO ASSIST IN MAKING INFORMED DECISIONS ABOUT FLOODING RISKS. THE HARRIS COUNTY FLOOD CONTROL DISTRICT HAS SUPPLIED THIS DATA. NO EXPRESS WARRANTIES ARE MADE BY HCFCO CONCERNING THE ACCURACY, COMPLETENESS, FITNESS, RELIABILITY, USABILITY, OR SUITABILITY OF THE DATA FOR ANY PURPOSE. HCFCO SHALL NOT BE LIABLE FOR INCORRECT RESULTS OR DAMAGES RESULTING DIRECTLY OR INDIRECTLY FROM THE USE OF THE DATA. HCFCO SHALL HAVE NO DUTY TO UPDATE THE DATA, EVEN IF IT SHOULD BECOME AWARE OF INACCURACIES IN THE DATA. THE USER ASSUMES ALL RISKS ASSOCIATED WITH THE USE OF THE DATA. THE INFORMATION WILL BECOME NULL AND VOID UPON RELEASE OF THE PRELIMINARY DFRMS.

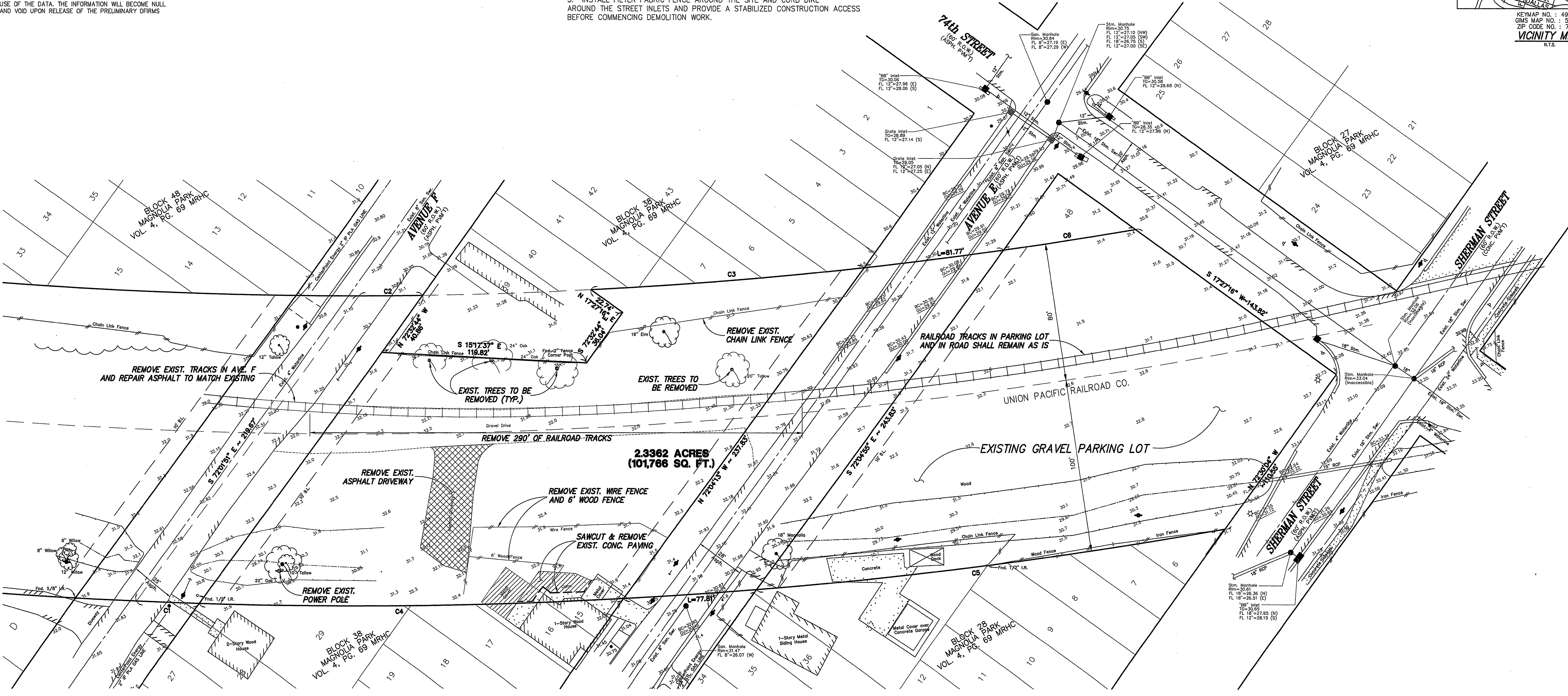
REFERENCE BENCHMARK
 FLOODPLAIN REFERENCE MARK NUMBER 040020 IS AN HCFCO BRASS DISK STAMPED BM5 WEISSER ON BRIDGE AT SOUTH 75TH STREET N-BOUND AND BRAYS BAYOU LOCATED ON DOWNSTREAM, EAST SIDEWALK OF N-BOUND BRIDGE, AT STREAM CENTERLINE IN KEYMAP 489W IN THE GRAYS WATERSHED NEAR STREAM D100-00-00. ELEVATION = 20.35 (FEET) NAVD 1988, 2001 ADJUSTMENT
TSARP (TROPICAL STORM ALLISON RECOVERY PROJECT)
SITE BENCHMARK
 TB11- PK NAIL WITH SHINER, LOCATED APPROX. 240 FT. WEST OF THE CENTERLINE OF 74TH STREET AT THE CENTERLINE OF AVENUE "E". ELEVATION = 32.17 (FEET).
SITE BENCHMARK
 TB22- PK NAIL WITH SHINER, LOCATED APPROX. 215 FT. EAST OF THE CENTERLINE OF 73RD STREET AT THE CENTERLINE OF AVENUE "F". ELEVATION = 32.58 (FEET).

TOTAL EXISTING IMPERVIOUS AREA TO BE REMOVED = 2,591 sq.ft. = 0.0595 ac.

- NOTES:**
1. CONTRACTOR TO CONTACT ALL UTILITY COMPANIES TO TERMINATE SERVICES BEFORE COMMENCING DEMOLITION WORK.
 2. ALL DEMOLISHED MATERIAL BECOME CONTRACTOR'S PROPERTY. IT IS CONTRACTOR'S RESPONSIBILITY TO REMOVE ALL DEMOLISHED ITEMS FROM SITE AND DISPOSE THEM PROPERLY.
 3. INSTALL FILTER FABRIC FENCE AROUND THE SITE AND CURB DIKE AROUND THE STREET INLETS AND PROVIDE A STABILIZED CONSTRUCTION ACCESS BEFORE COMMENCING DEMOLITION WORK.



John P. McGovern, M.D.
Community Sports & Recreation Building
 7318 AVENUE F
 HOUSTON, TEXAS 77011



- LEGEND**
- ✓ Anchor
 - Pipeline Vent
 - B-Inlet
 - BB-Inlet
 - ⊕ Fire Hydrant
 - ⊙ Light Standard
 - ⊙ Power Pole
 - ⊙ Sign
 - ⊙ Water Meter
 - ⊙ Water Valve
 - ⊙ Overhead Electric
 - ⊙ Traffic Pulbox
 - Guard Post

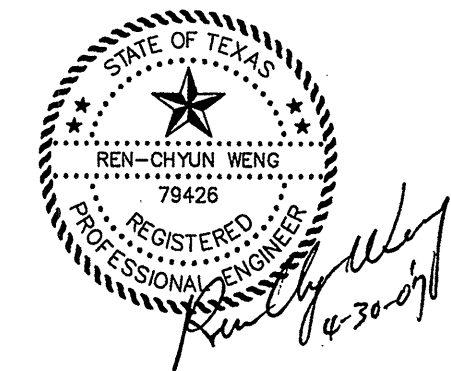
CURVE TABLE

CURVE	DELTA	RADIUS	ARC LENGTH	CHORD
C1	00°42'27"	2,914.79'	35.99'	N18°05'31"W ~ 35.99'
C2	00°46'42"	2,734.79'	37.15'	S18°40'47"E ~ 37.15'
C3	03°20'56"	2,734.79'	159.84'	S22°48'21"E ~ 159.82'
C4	04°52'56"	2,914.79'	248.37'	N18°53'12"W ~ 248.29'
C5	05°24'28"	2,914.79'	275.07'	N25°33'39"W ~ 274.97'
C6	01°37'29"	2,734.79'	77.55'	S27°00'20"E ~ 77.55'

CENTER POINT CAUTION: UNDERGROUND GAS FACILITIES
 LOCATIONS OF CENTERPOINT ENERGY MAIN LINES (TO INCLUDE UNIT GAS TRANSMISSION AND/OR INDUSTRIAL GAS SUPPLY CORPORATION WHERE APPLICABLE) ARE SHOWN IN AN APPROXIMATE LOCATION ONLY. SERVICE LINES ARE USUALLY NOT SHOWN, OUR SIGNATURE ON THESE PLANS ONLY INDICATES THAT OUR FACILITIES ARE SHOWN IN APPROXIMATE LOCATION. IT DOES NOT IMPLY THAT A CONFLICT ANALYSIS HAS BEEN MADE. THE CONTRACTOR SHALL CONTACT THE UTILITY COORDINATING COMMITTEE AT (713) 223-4567 OR 1-800-869-8344 A MINIMUM OF 48 HOURS PRIOR TO CONSTRUCTION TO HAVE MAIN AND SERVICE LINES FIELD LOCATED.
 -WHEN CENTER POINT ENERGY PIPE LINE MARKINGS ARE NOT VISIBLE, CALL (713) 967-8037 (7:00 AM TO 4:30 PM). FOR STATUS OF LINE LOCATION REQUEST BEFORE EXCAVATION BEGINS.
 -WHEN EXCAVATING WITHIN EIGHTEEN INCHES (18") OF THE INDICATED LOCATION OF CENTER POINT ENERGY FACILITIES, ALL EXCAVATION MUST BE ACCOMPLISHED USING NON-MECHANIZED EXCAVATION PROCEDURES.
 -WHEN CENTER POINT ENERGY FACILITIES ARE EXPOSED, SUFFICIENT SUPPORT MUST BE PROVIDED TO THE FACILITIES TO PREVENT EXCESSIVE STRESS ON THE PIPING.
 THE CONTRACTOR IS FULLY RESPONSIBLE FOR ANY DAMAGES CAUSED BY THE CONTRACTOR'S FAILURE TO EXACTLY LOCATE AND PRESERVE THESE UNDERGROUND FACILITIES.

HOUSTON LIGHTING AND POWER (HL&P)
WARNING: OVERHEAD ELECTRICAL FACILITIES
 OVERHEAD LINES MAY EXIST ON THE PROPERTY. WE HAVE NOT ATTEMPTED TO MARK THOSE LINES SINCE THEY ARE CLEARLY VISIBLE, BUT YOU SHOULD LOCATE THEM PRIOR TO BEGINNING ANY CONSTRUCTION.
 TEXAS LAW, SECTION 752, HEALTH & SAFETY CODE, FORBIDS ALL ACTIVITIES IN WHICH PERSONS OR THINGS MAY COME WITHIN SIX (6) FEET OF LIVE OVERHEAD HIGH VOLTAGE LINES. PARTIES RESPONSIBLE FOR THE WORK, INCLUDING CONTRACTORS, ARE LEGALLY RESPONSIBLE FOR SAFETY OF CONSTRUCTION WORKERS UNDER THIS LAW. THIS LAW CARRIES BOTH CRIMINAL AND CIVIL LIABILITY. TO ARRANGE FOR LINES TO BE TURNED OFF OR REMOVED CALL CENTERPOINT ENERGY AT (713) 207-7777.

SOUTHWESTERN BELL TELEPHONE CO. (SBC)
 THE LOCATION OF SBC FACILITIES ARE SHOWN IN AN APPROXIMATE WAY ONLY. THE CONTRACTOR SHALL DETERMINE THE EXACT LOCATION BEFORE COMMENCING WORK. HE AGREES TO BE FULLY RESPONSIBLE FOR ANY AND ALL DAMAGES WHICH MIGHT BE OCCASIONED BY THIS FAILURE TO EXACTLY LOCATE AND PRESERVE THESE UNDERGROUND UTILITIES.
 THE CONTRACTOR SHALL CALL 1-800-344-8377 A MINIMUM OF 48 HOURS PRIOR TO CONSTRUCTION TO HAVE UNDERGROUND LINES FIELD LOCATED.
 WHEN EXCAVATING WITHIN EIGHTEEN INCHES (18") OF THE INDICATED LOCATION OF SBC FACILITIES, ALL EXCAVATIONS MUST BE ACCOMPLISHED USING NON-MECHANIZED EXCAVATION PROCEDURES. WHEN BORING, THE CONTRACTOR SHALL EXPOSE THE SBC FACILITIES.
 WHEN SBC FACILITIES ARE EXPOSED, THE CONTRACTOR WILL PROVIDE SUPPORT TO PREVENT DAMAGE TO THE CONDUIT DUCTS OR CABLES. WHEN EXCAVATING NEAR TELEPHONE POLES THE CONTRACTOR SHALL BRACE THE POLE FOR SUPPORT.



APPROVED
 FOR BUILDING PERMIT ONLY
 CITY OF HOUSTON
 CODE ENFORCEMENT DIVISION

The owner is responsible for compliance with the Building Code. Such approved plans and specifications shall not be changed, modified or altered without authorizations from the building official, and all work shall be done in accordance with the approved plans.
 NO. 368

RENEngineering, Inc.
 Consulting Engineers
 6100 Corporate Dr., Suite 515, Houston, TX 77036
 Tel: 713-981-0041 • Fax: 713-981-1156

PROJ: 06020 SUBMITTED: REN SCALE: 1" = 30'-0" DATE: 4/30/2007
 DESIGNED: S.W. DRAWN: S.W. SURVEY: CF&A SHEET 1 OF 10

THAT'S ARCHITECTURE
 2402 COMMONWEALTH #100, HOUSTON, TX 77006
 TELEPHONE 713/222-1406 FAX 713/222-1606

ISSUES & REVISIONS

NO.	DESCRIPTION

TOPOGRAPHIC AND DEMOLITION PLAN

PROJECT NO. 2001-30
 SCALE AS NOTED
 SHEET NUMBER
C1.0