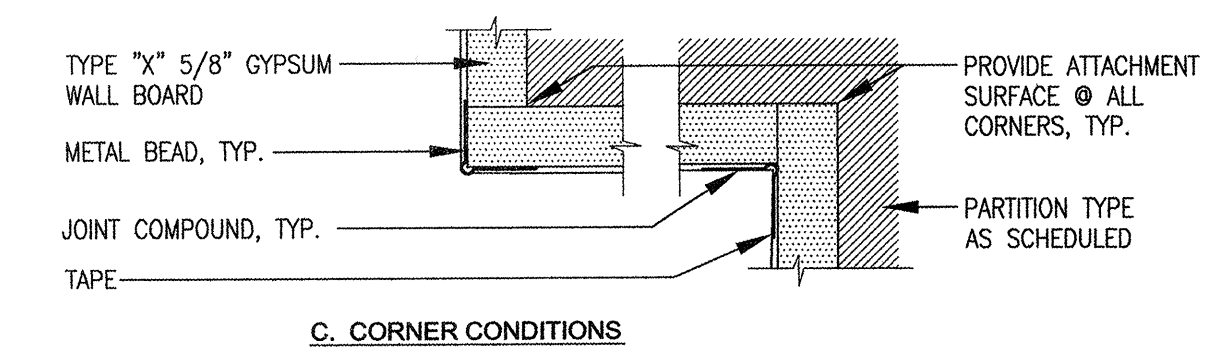


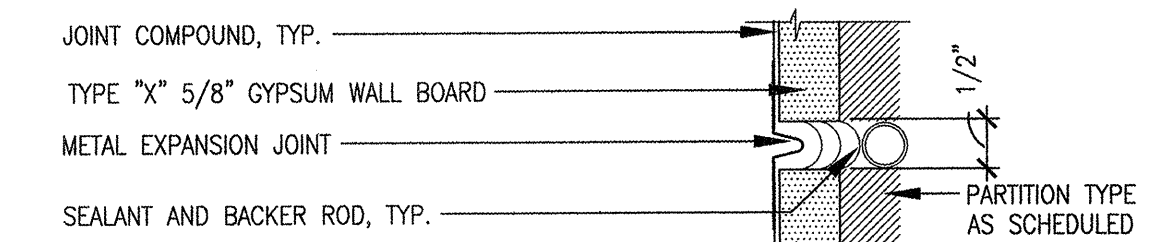
0 4" 8"
SCALE: 3" = 1'0"

SECTION @ GYPSUM BOARD FRAME (12)

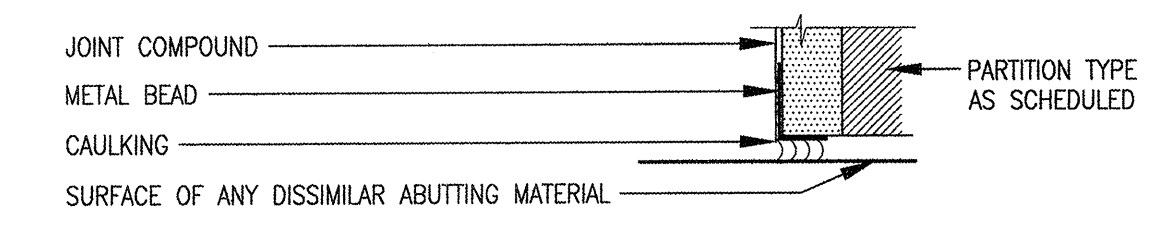
NOT USED (10)



C. CORNER CONDITIONS



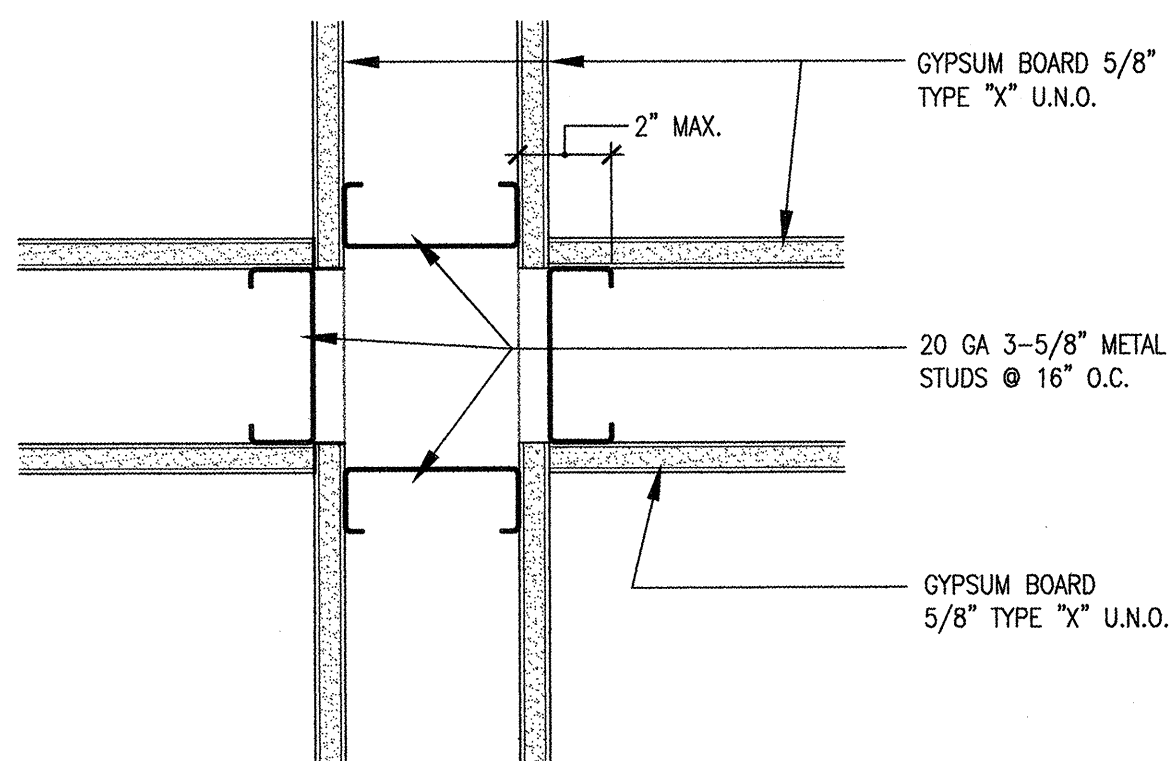
B. TYPICAL EXPANSION JOINT



A. ABUTTING A SURFACE

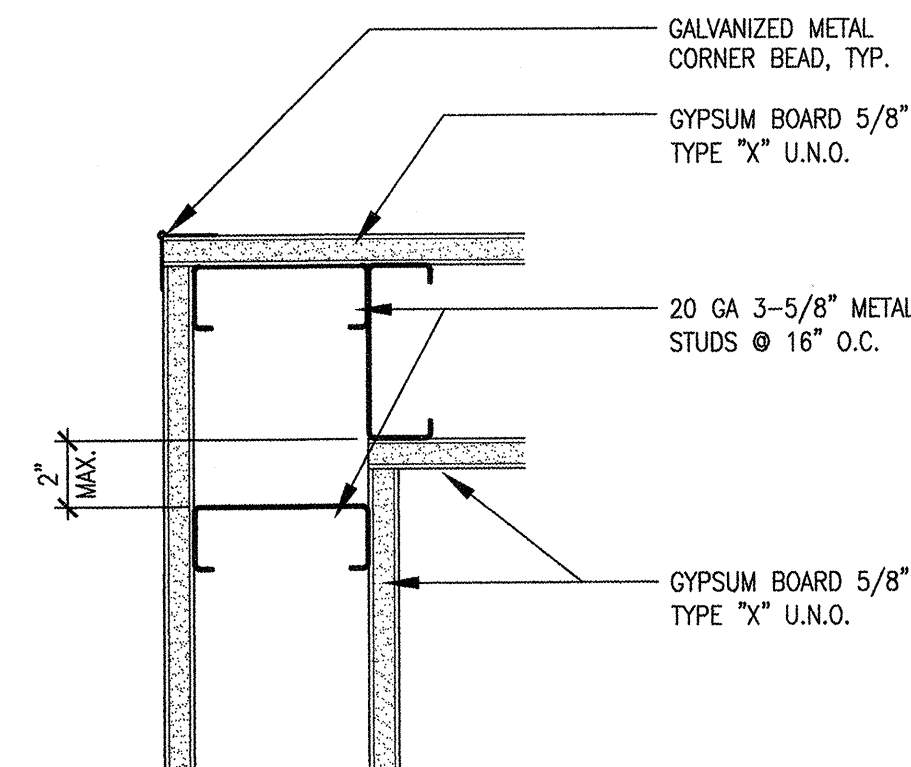
0 2" 4"
SCALE: 6" = 1'0"

GYPSUM BOARD JOINTS (9)



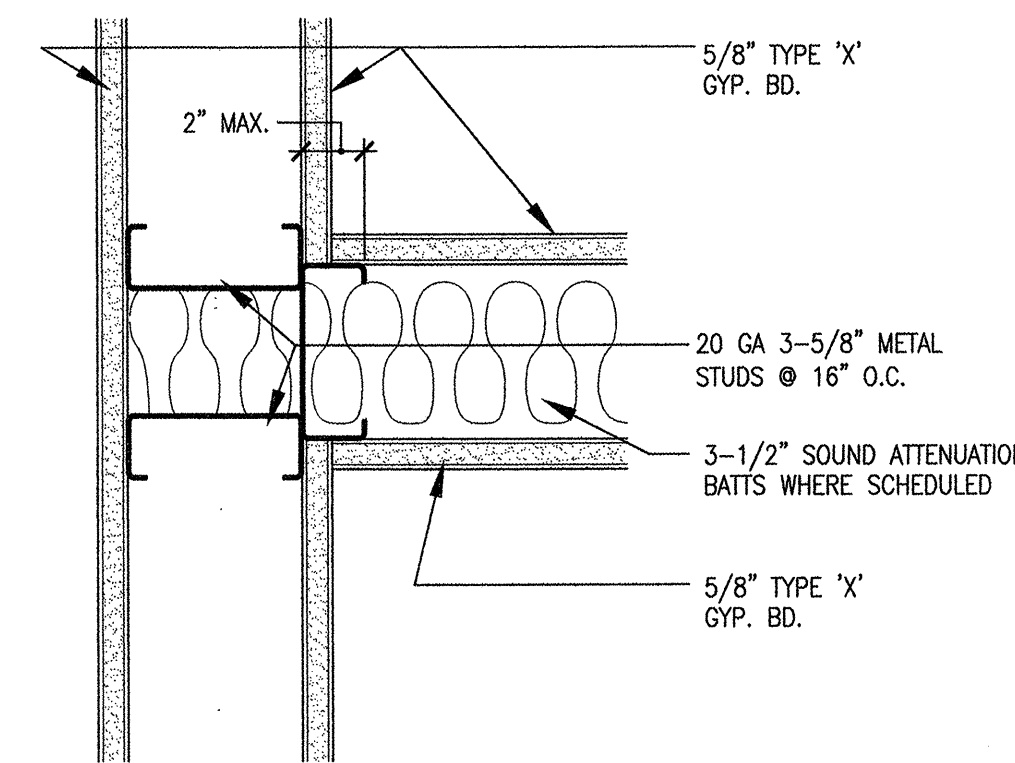
0 4" 8"
SCALE: 3" = 1'0"

GYP. BD. WALL CROSSING (8)



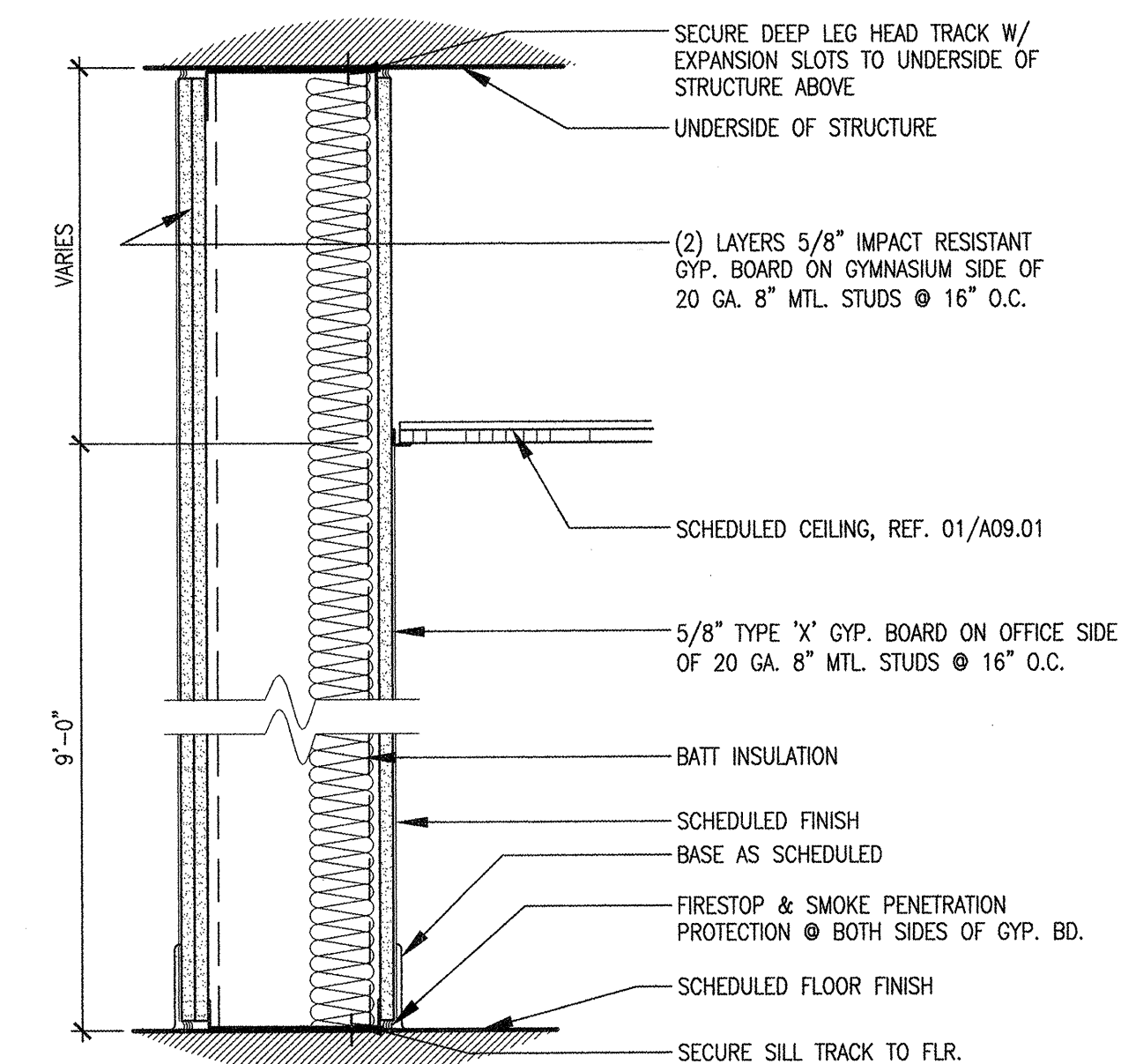
0 4" 8"
SCALE: 3" = 1'0"

GYP. BD. WALL CORNER (7)



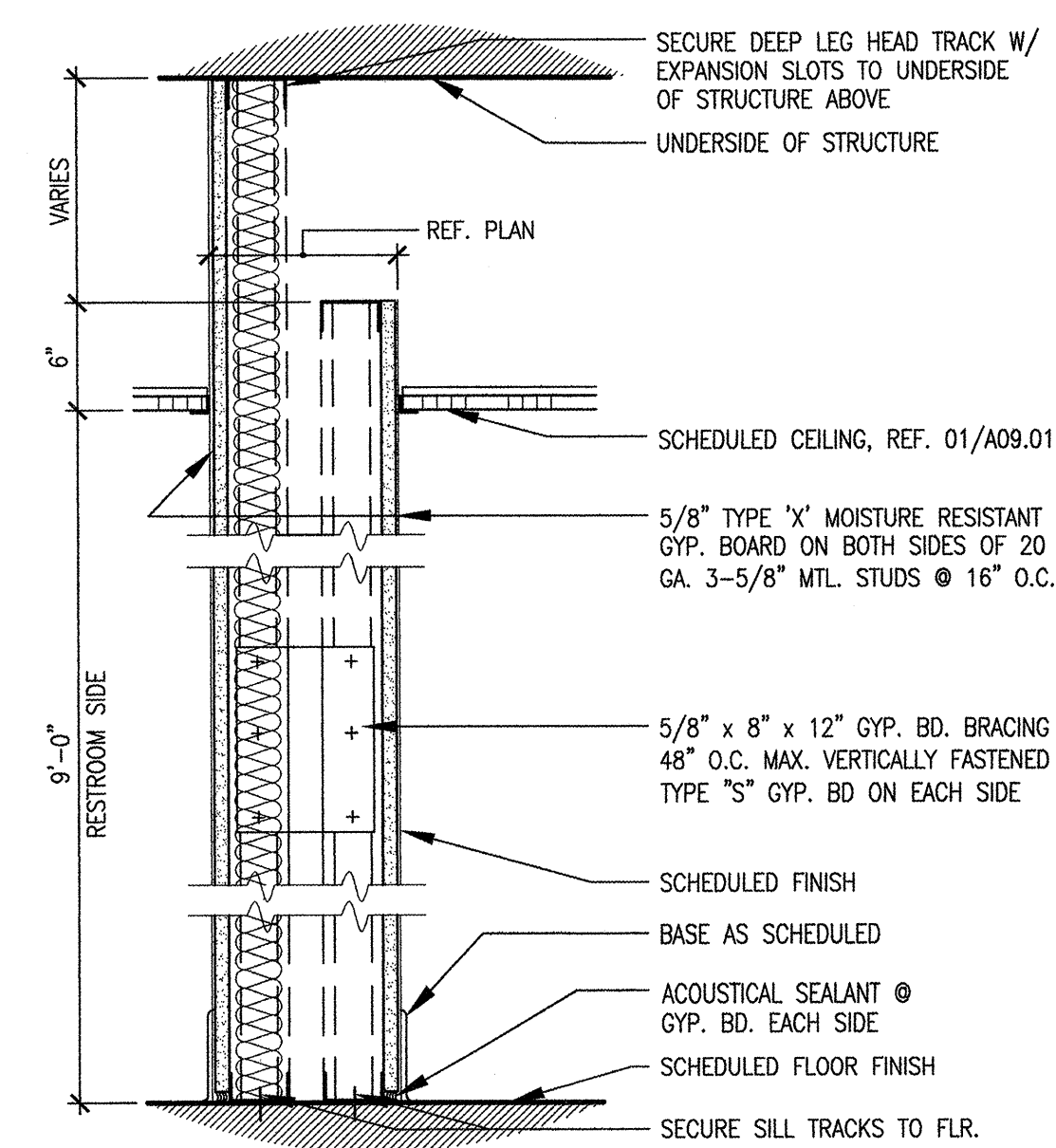
0 4" 8"
SCALE: 3" = 1'0"

GYP. BD. WALL TEE INTERSECTION (6)



0 8" 1'4"
SCALE: 1-1/2" = 1'0"

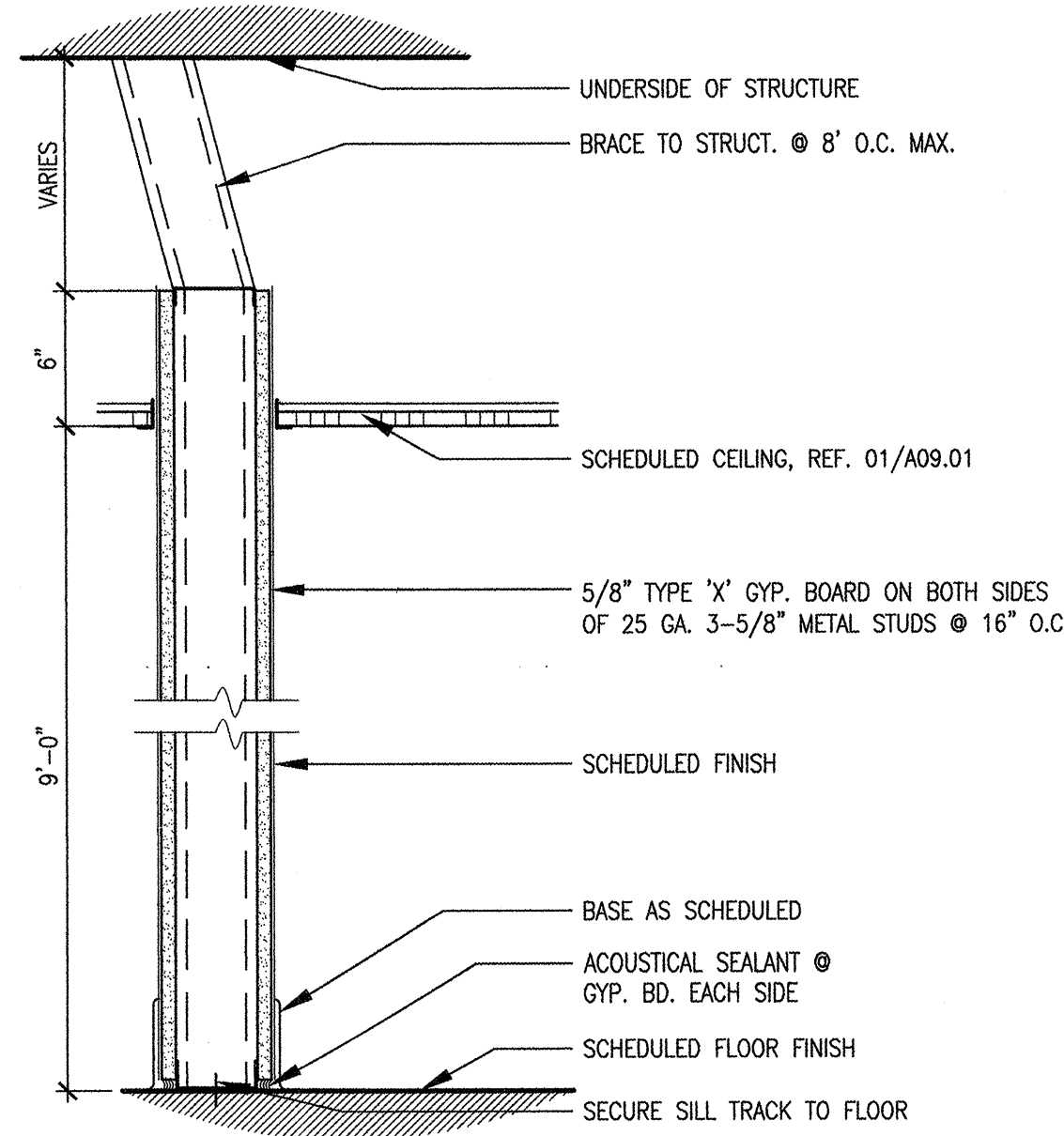
PARTITION TYPE "E" (5)



0 8" 1'4"
SCALE: 1-1/2" = 1'0"

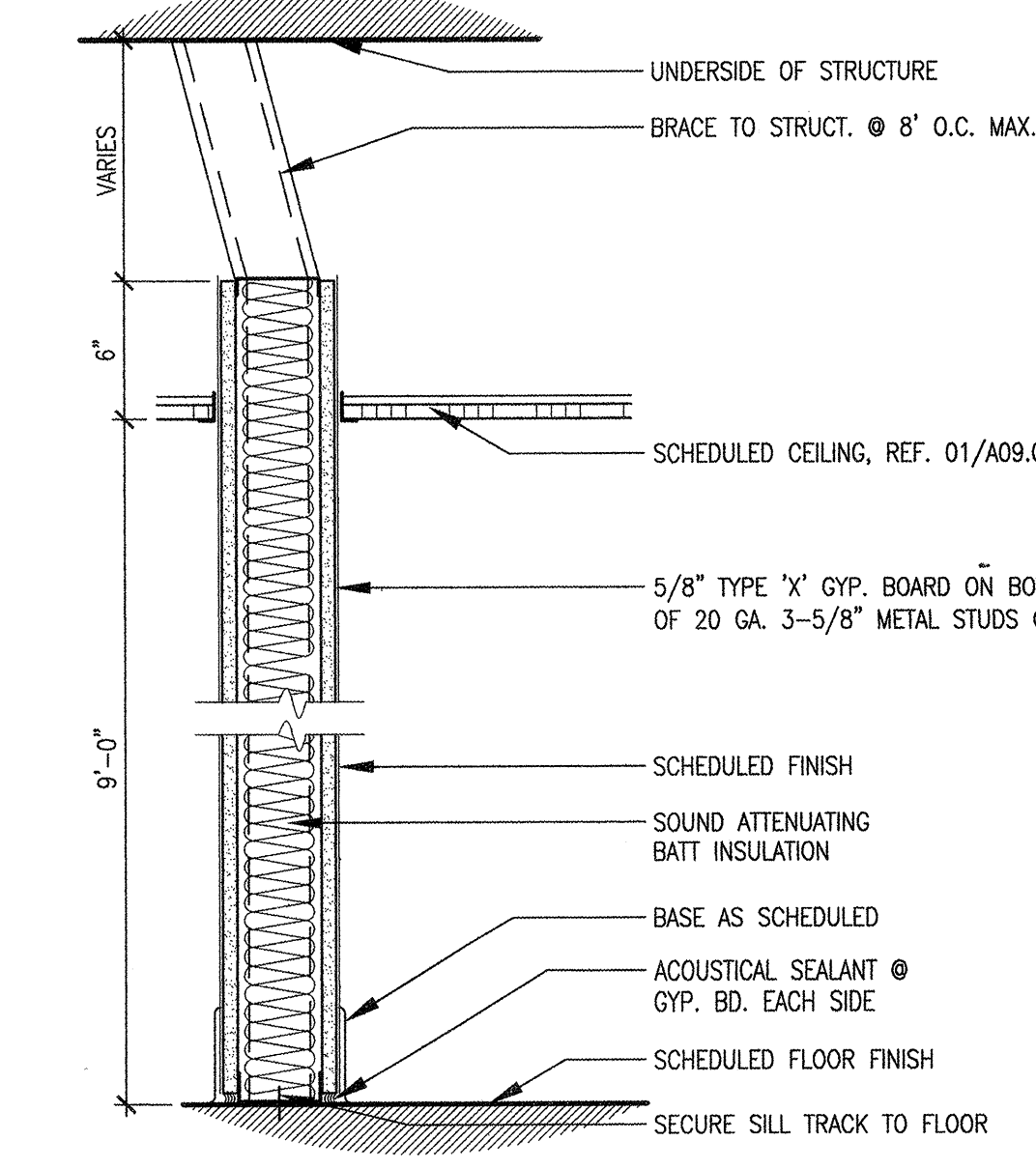
PARTITION TYPE "D" (4)

NOT USED (3)



0 8" 1'4"
SCALE: 1-1/2" = 1'0"

PARTITION TYPE "B" (2)



0 8" 1'4"
SCALE: 1-1/2" = 1'0"

PARTITION TYPE "A" (1)



John P. McGovern, M.D.
Community Sports & Recreation Building
7318 AVENUE F
HOUSTON, TEXAS 77011

THAT'S ARCHITECTURE

2402 COMMONWEALTH #100, HOUSTON, TX 77006
TELEPHONE 713/222-1406 FAX 713/222-1506



ISSUES & REVISIONS
09/16/06 ISSUE FOR PERMIT

APPROVED
FOR BUILDING PERMIT ONLY
CITY OF HOUSTON
CODE ENFORCEMENT DIVISION

The owner is responsible for compliance with the Building Code. Such approved plans and specifications shall not be changed, modified or altered without authorization from the building official, and all work shall be done in accordance with the approved plans.

SHEET TITLE
NO. 250
INTERIOR PARTITIONS & DETAILS

PROJECT NO. 2001-30
SCALE AS NOTED

SHEET NUMBER

A06.01