

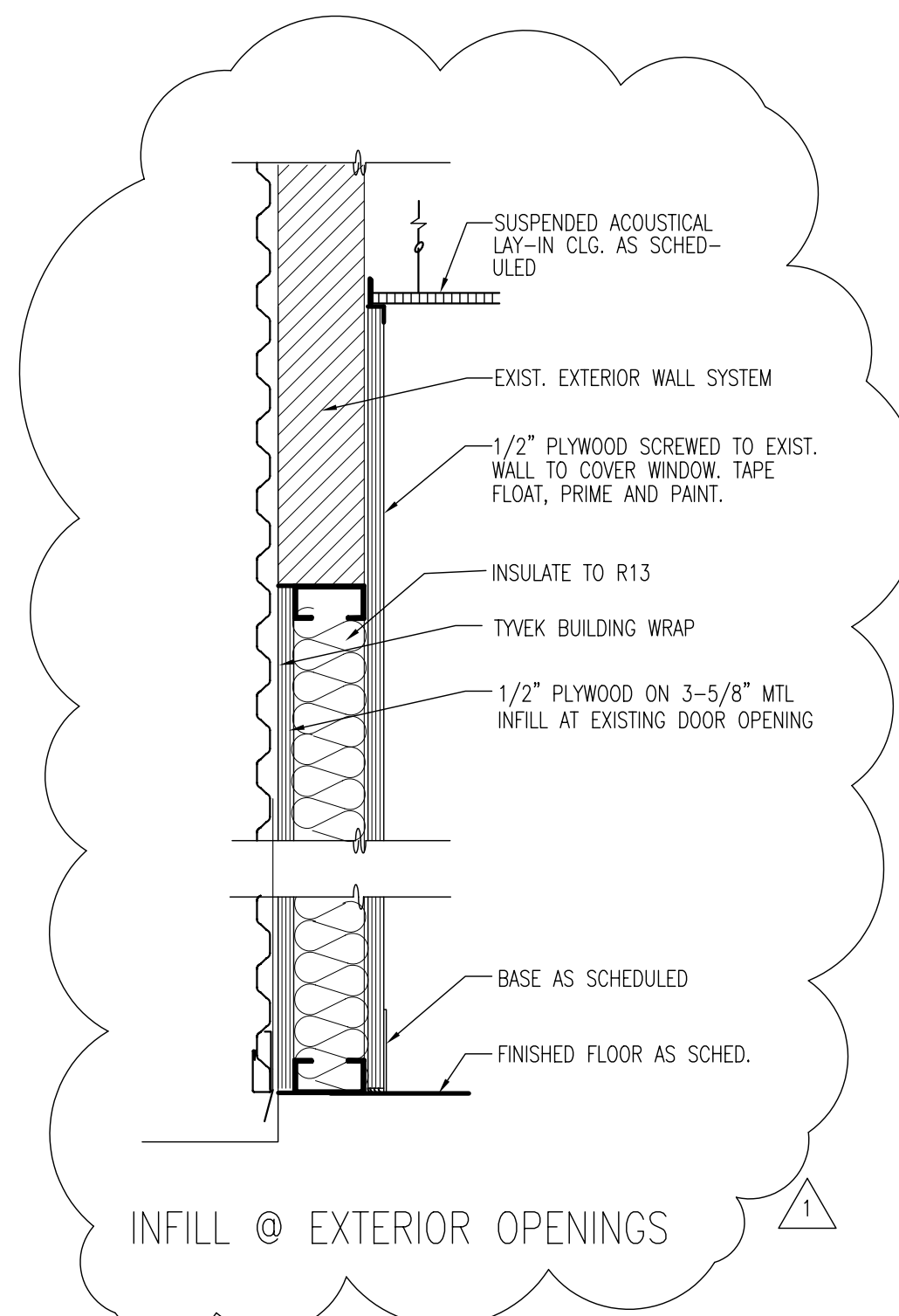
WINDOW TYPE A

HOLLOW METAL FRAMES PAINTED
LOCKABLE 1/4" TEMPERED GLASS
SLIDING PANEL UNIT WITH CONCEALED
HARDWARE

WINDOW TYPE B

HOLLOW METAL FRAMES PAINTED
LOCKABLE 1/4" TEMPERED GLASS
SLIDING PANEL UNIT WITH CONCEALED
HARDWARE

03 INTERIOR WINDOW TYPES
SCALE: 1 1/2" = 1'-0"



INFILL @ EXTERIOR OPENINGS

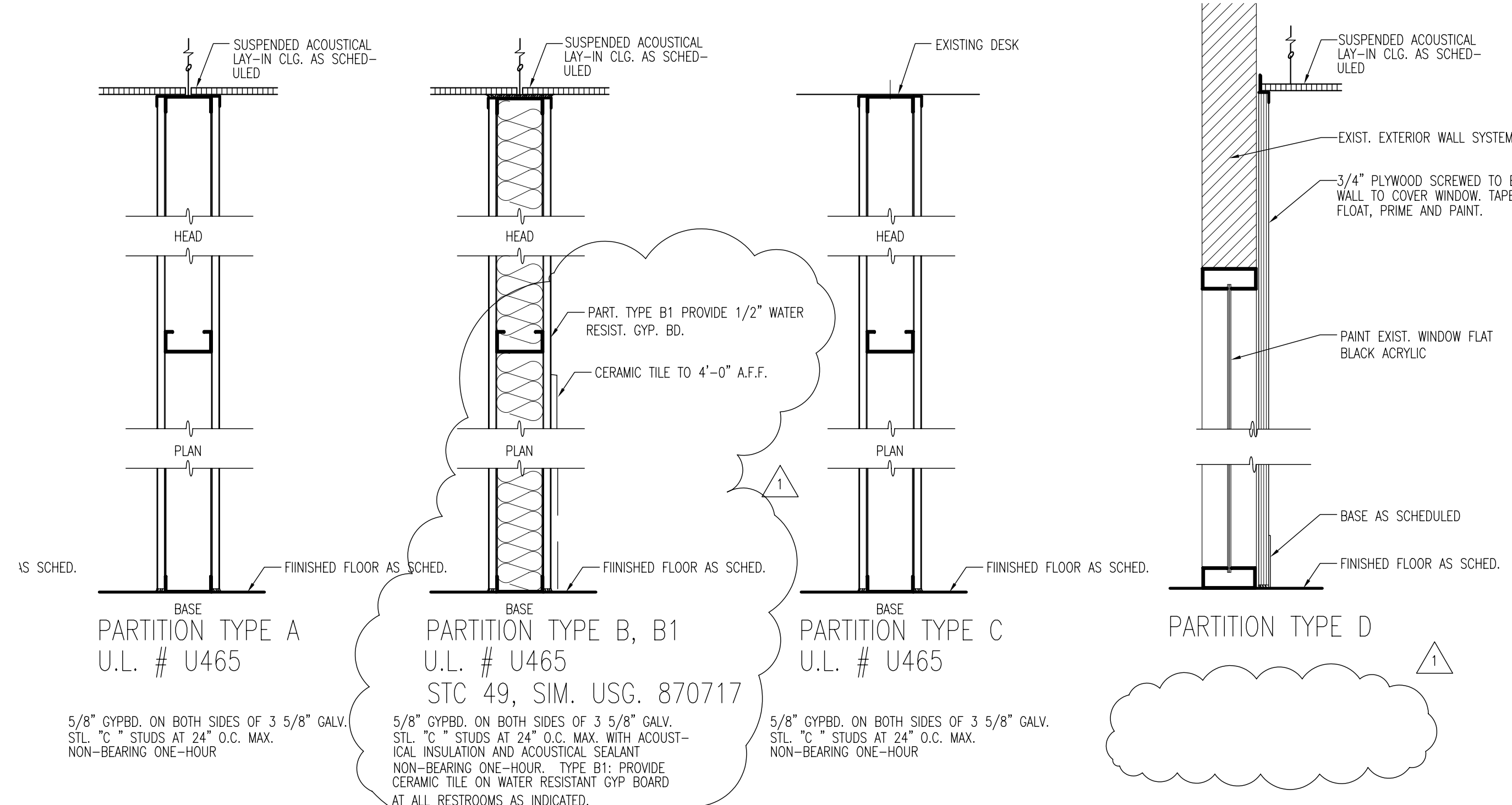
WINDOW SCHEDULE									
NO.	TYPE	WD.	HT.	THK.	MATERIAL	FRAME	HEAD/JAMB	SILL	NOTES
A	NEW	-	-	-	CONCEALED TRACK/GLASS	HM			INTERIOR
B	NEW	-	-	-	CONCEALED TRACK/GLASS	HM			INTERIOR

DOOR SCHEDULE									
DOOR	TYPE	WD.	HT.	THK.	MATERIAL	FRAME	HEAD/JAMB	SILL	NOTES
1	EXIST ENTRY	-	-	-	METAL/GLASS		H.M.		EXTERIOR
1A	EXIST SIDE	-	-	-	-		*		EXTERIOR
2	EXIST	-	-	-	WD/GLASS LITE		*		
3	EXIST	-	-	-	*		*		
4	EXIST	-	-	-	PR. WD/GLASS		*		
5	NEW	3'-0"	6'-8"	1-3/8"			*		
6	NEW	-	-	-			*		
7	NEW	-	-	-			*		
8	NEW	-	-	-	PTD. S.C. WD		*		ELECTRONIC ACCESS. TRANSOM LITE
8A	NEW	-	-	-	*		*		
8B	NEW	-	-	-	*		*		
9	NEW	-	-	-	*		*		
9A	NEW	-	-	-	*		*		
10	NEW	-	-	-	*		*		
11	NEW	-	-	-	*		*		
12	NEW	-	-	-	*		*		
13	NEW	-	-	-	*		*		
14	NEW	-	-	-	*		*		
15	NEW	-	-	-	*		*		
16	NEW	-	-	-	*		*		
17	NEW	2'-0"	6'-8"	-	*		*		
18	NEW	3'-0"	6'-8"	1-3/8"	*		*		
19	NEW	-	-	-	*		*		
20	NEW	-	-	-	*		*		
21	NEW	-	-	-	*		*		
22	NEW	-	-	-	*		*		
23	NEW	3'-0"	6'-8"	1-3/8"	PTD. S.C. WD		*		
24	NEW	-	-	-	*		*		
25	NEW	-	-	-	*		*		
26	NEW	-	-	-	*		*		
27	NEW	3'-0"	6'-8"	1-3/4"	METAL EXTERIOR DOOR		*		
28	NEW	3'-0"	6'-8"	1-3/8"	PTD. S.C. WD		*		
29	NEW	1'-6"	6'-8"	-	PAIR PTD. WD. DOORS		*		
30	NEW	3'-0"	6'-8"	1-3/8"	PTD. S.C. WD		*		
31	NEW	-	-	-	*		*		
32	NEW	-	-	-	*		*		
33	NEW	-	-	-	*		*		
34	NEW	-	-	-	POCKET SLIDING DOOR		*		

NOTE: ALL NEW DOORS TO BE SOLID CORE BIRCH PAINT GRADE DOORS

SELECTIVE FINISH SCHEDULE					
	CEILING	FLOOR	BASE	WALLS	REMARKS
ROOM 100	PEJ	VCT	RBS	EMP/XGP	
ROOM 101	SAT	VCT	RBS	EMP/XGP	
ROOM 102	SAT	VCT	RBS	XGP	
ROOM 103	SAT	VCT	RBS	XGP	
ROOM 104	SAT	VCT	RBS	XGP	
ROOM 105	SAT	VCT	RBS	EMP/XGP	
ROOM 106	SAT	VCT	RBS	XGP	
ROOM 107/A/B	SAT	VCT	RBS	EMP/XGP	
ROOM 108	SAT	VCT	RBS	EMP/XGP	
ROOM 109	SAT	CT	CT	EMP/CT/XGP	
ROOM 110	SAT	CT	CT	CT/XGP	
ROOM 112	SAT	CT	CT	EMP/CT/XGP	
ROOM 113	SAT	VCT	RBS	EMP/XGP	
ROOM 114	SAT	VCT	RBS	EMP/XGP	
ROOM 115	SAT	VCT	RBS	EMP/XGP	
ROOM 116	SAT	VCT	RBS	EMP/XGP	
ROOM 117	SAT	VCT	RBS	EMP/XGP	
ROOM 118	SAT	VCT	RBS	EMP/XGP	
ROOM 119	SAT	VCT	RBS	XGP	
ROOM 120	SAT	VCT	RBS	XGP	
ROOM 121	SAT	VCT	RBS	XGP	
ROOM 122	SAT	VCT	RBS	EMP/XGP	
ROOM 123	SAT	VCT	RBS	XGP	
ROOM 124	SAT	VCT	RBS	EMP/XGP	
ROOM 125	SAT	VCT	RBS	EMP/XGP	
ROOM 126	SAT	CT	CT	EMP/CT/XGP	
ROOM 127	SAT	VCT	RBS	EMP/XGP	

FINISH SCHEDULE KEY	
XGP	5/8" GYPSUM BOARD PAINTED, MIN. TEXTURE
GPB	1/2" GYPSUM BOARD PAINTED, MIN. TEXTURE
RBS	RUBBER BASE STRAIGHT, 4"
CT	CERAMIC TILE
SAT	SUSPENDED ACOUSTICAL TILE, REGULAR GRID
VCT	VINYL COMPOSITION TILE
PEJ	PAINTED EXPOSED BAR JOISTS
EMP	EXISTING MASONRY PAINTED



PARTITION TYPE A
U.L. # U465

5/8" GYPBD. ON BOTH SIDES OF 3 5/8" GALV.
STL. "C" STUDS AT 24" O.C. MAX.
NON-BEARING ONE-HOUR

PARTITION TYPE B, B1
U.L. # U465
STC 49, SIM. USG. 870717

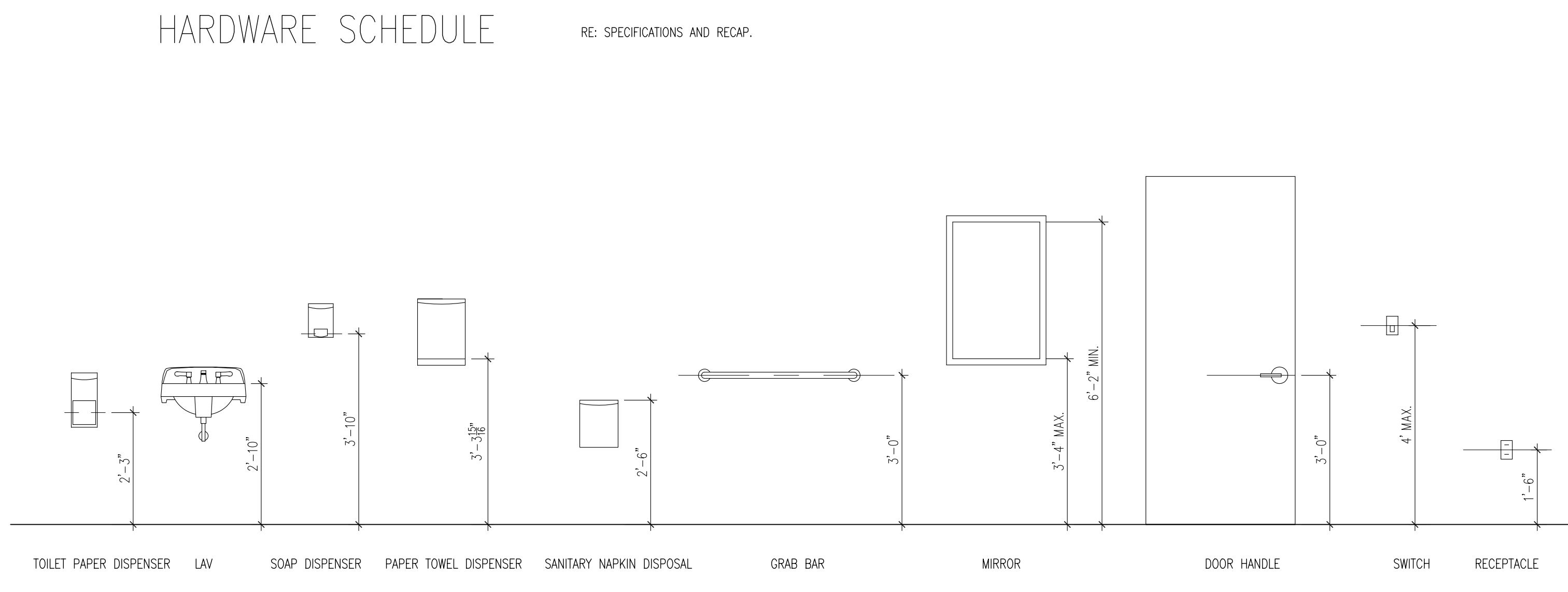
5/8" GYPBD. ON BOTH SIDES OF 3 5/8" GALV.
STL. "C" STUDS AT 24" O.C. MAX. WITH ACOUSTICAL INSULATION AND ACOUSTICAL SEALANT
NON-BEARING ONE-HOUR. TYPE B1: PROVIDE CERAMIC TILE ON WATER RESISTANT GYP BOARD AT ALL RESTROOMS AS INDICATED.

PARTITION TYPE C
U.L. # U465

5/8" GYPBD. ON BOTH SIDES OF 3 5/8" GALV.
STL. "C" STUDS AT 24" O.C. MAX.

PARTITION TYPE D

02 PARTITION TYPES
SCALE: 1 1/2" = 1'-0"

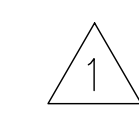


HARDWARE SCHEDULE

RE: SPECIFICATIONS AND RECAP.

01 MOUNTING HEIGHTS
SCALE: 1/2" = 1'-0"

REVISIONS
NOVEMBER 18, 2009



EL CENTRO DE CORANZÓN CANAL ST.
7635 CANAL ST.
HOUSTON, TEXAS 77012

ISSUE FOR PERMIT



deborah morris studios
2101 Winter Street, Studio 7
Houston, Texas 77007
713 868 2231

PROJECT ISSUED FOR REVIEW
OCTOBER 20, 2009

TITLE
SCHEDULE / DETAILS
SHEET

A-5